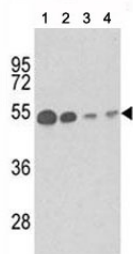


b-Tubulin Antibody [clone 86CT4.4.4] (F40185)

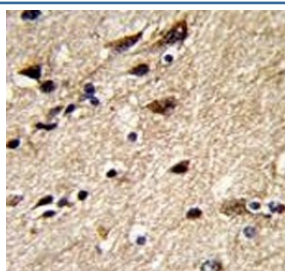
Catalog No.	Formulation	Size
F40185-0.4ML	In 1X PBS, pH 7.4, with 0.09% sodium azide	0.4 ml
F40185-0.08ML	In 1X PBS, pH 7.4, with 0.09% sodium azide	0.08 ml

[Bulk quote request](#)

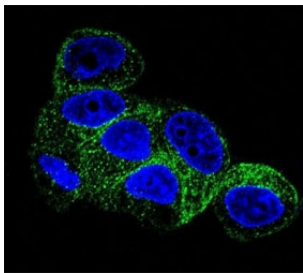
Availability	1-3 business days
Species Reactivity	Human, Mouse
Format	Purified
Clonality	Monoclonal (mouse origin)
Isotype	Mouse IgG1
Clone Name	86CT4.4.4
Purity	Purified
UniProt	Q9H4B7
Applications	Western Blot : 1:100-1:500 IHC (Paraffin) : 1:10-1:50 Immunofluorescence : 1:10-1:50
Limitations	This b-Tubulin antibody is available for research use only.



Western blot analysis of b-Tubulin antibody and (1) mouse brain tissue, (2) Y79, (3) CEM and (4) 293 lysate.



IHC analysis of FFPE human brain stained with b-Tubulin antibody



Confocal immunofluorescent analysis of b-Tubulin antibody with HepG2 cells followed by Alexa Fluor 488-conjugated goat anti-mouse IgG (green). DAPI was used as a nuclear counterstain (blue).

Description

This gene encodes a member of the beta tubulin protein family. Beta tubulins are one of two core protein families (alpha and beta tubulins) that heterodimerize and assemble to form microtubules. Tubulin beta-1 chain is specifically expressed in platelets and megakaryocytes and may be involved in proplatelet production and platelet release. A mutations in this gene is associated with autosomal dominant macrothrombocytopenia. Two pseudogenes of this gene are found on chromosome Y.

Application Notes

Titration of the b-Tubulin antibody may be required due to differences in protocols and secondary/substrate sensitivity.

Immunogen

This b-Tubulin antibody was produced from mice immunized with recombinant human TUBB1.

Storage

Aliquot the b-Tubulin antibody and store frozen at -20oC or colder. Avoid repeated freeze-thaw cycles.