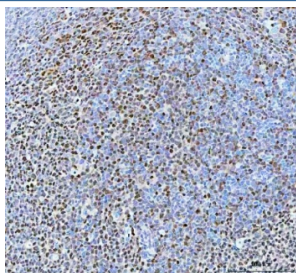


B-cell lymphoma/leukemia 11B Antibody / BCL11B (RQ8042)

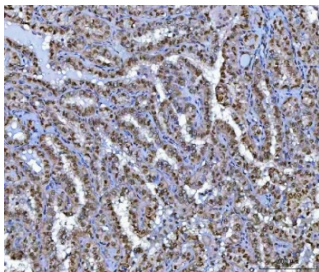
Catalog No.	Formulation	Size
RQ8042	0.5mg/ml if reconstituted with 0.2ml sterile DI water	100 ug

Bulk quote request

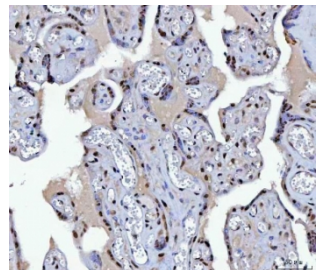
Availability	1-3 business days
Species Reactivity	Human, Rat
Format	Antigen affinity purified
Clonality	Polyclonal (rabbit origin)
Isotype	Rabbit IgG
Purity	Antigen affinity purified
Buffer	Lyophilized from 1X PBS with 2% Trehalose
UniProt	Q9C0K0
Localization	Nuclear
Applications	Western Blot : 0.5-1ug/ml Immunohistochemistry (FFPE) : 2-5ug/ml Immunofluorescence : 5ug/ml Flow Cytometry : 1-3ug/million cells Direct ELISA : 0.1-0.5ug/ml
Limitations	This B-cell lymphoma/leukemia 11B antibody is available for research use only.



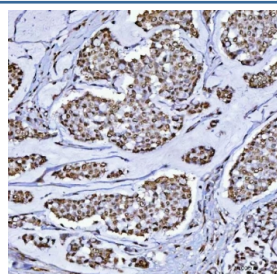
IHC staining of FFPE human chronic tonsillitis tissue with B-cell lymphoma/leukemia 11B antibody. HIER: boil tissue sections in pH8 EDTA for 20 min and allow to cool before testing.



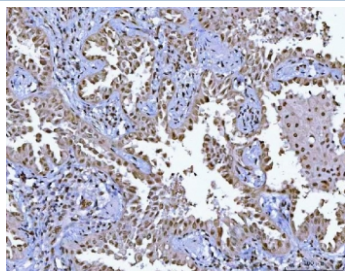
IHC staining of FFPE human thyroid papillary carcinoma tissue with B-cell lymphoma/leukemia 11B antibody. HIER: boil tissue sections in pH8 EDTA for 20 min and allow to cool before testing.



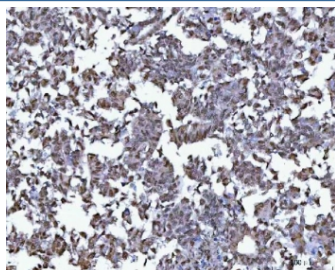
IHC staining of FFPE human placental tissue with B-cell lymphoma/leukemia 11B antibody. HIER: boil tissue sections in pH8 EDTA for 20 min and allow to cool before testing.



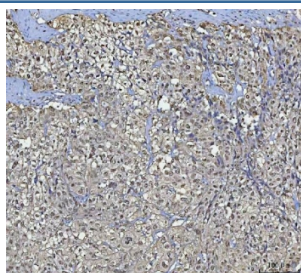
IHC staining of FFPE human breast cancer tissue with B-cell lymphoma/leukemia 11B antibody. HIER: boil tissue sections in pH8 EDTA for 20 min and allow to cool before testing.



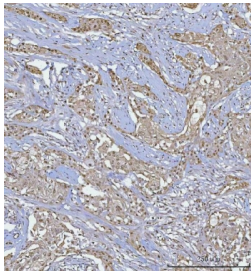
IHC staining of FFPE human lung adenocarcinoma tissue with B-cell lymphoma/leukemia 11B antibody. HIER: boil tissue sections in pH8 EDTA for 20 min and allow to cool before testing.



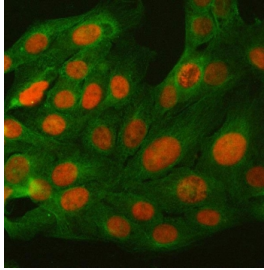
IHC staining of FFPE human ovary serous carcinoma tissue with B-cell lymphoma/leukemia 11B antibody. HIER: boil tissue sections in pH8 EDTA for 20 min and allow to cool before testing.



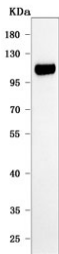
IHC staining of FFPE human bladder urothelial carcinoma with squamous differentiation tissue with B-cell lymphoma/leukemia 11B antibody. HIER: boil tissue sections in pH8 EDTA for 20 min and allow to cool before testing.



IHC staining of FFPE human lymph node metastasis carcinoma with squamous differentiation tissue with B-cell lymphoma/leukemia 11B antibody. HIER: boil tissue sections in pH8 EDTA for 20 min and allow to cool before testing.



Immunofluorescent staining of FFPE human U-2 OS cells with B-cell lymphoma/leukemia 11B antibody (red) and Alpha Tubulin mAb (green). HIER: steam section in pH6 citrate buffer for 20 min.



Western blot testing of human MOLT4 cell lysate with B-cell lymphoma/leukemia 11B antibody. Predicted molecular weight ~96 kDa but the modified forms of the protein can be observed at ~130 kDa.

Description

B-cell lymphoma/leukemia 11B is a protein that in humans is encoded by the BCL11B gene. This gene encodes a C2H2-type zinc finger protein and is closely related to BCL11A, a gene whose translocation may be associated with B-cell malignancies. Although the specific function of this gene has not been determined, the encoded protein is known to be a transcriptional repressor, and is regulated by the NURD nucleosome remodeling and histone deacetylase complex. Four alternatively spliced transcript variants encoding distinct isoforms have been found for this gene.

Application Notes

Optimal dilution of the B-cell lymphoma/leukemia 11B antibody should be determined by the researcher.

Immunogen

E. coli-derived recombinant human protein (amino acids Q10-A628) was used as the immunogen for the B-cell lymphoma/leukemia 11B antibody.

Storage

After reconstitution, the B-cell lymphoma/leukemia 11B antibody can be stored for up to one month at 4°C. For long-term, aliquot and store at -20°C. Avoid repeated freezing and thawing.

