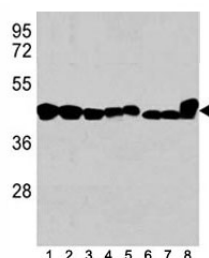


b-Actin Antibody [clone 137CT26.1.1] (F40216)

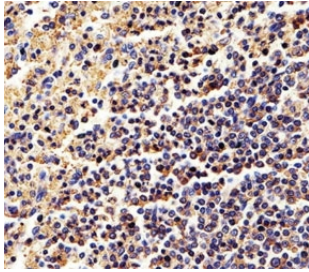
Catalog No.	Formulation	Size
F40216-0.4ML	In 1X PBS, pH 7.4, with 0.09% sodium azide	0.4 ml
F40216-0.08ML	In 1X PBS, pH 7.4, with 0.09% sodium azide	0.08 ml

[Bulk quote request](#)

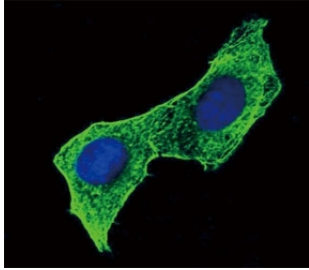
Availability	1-3 business days
Species Reactivity	Human, Mouse, Rat
Predicted Reactivity	Bovine, Chicken, Horse, Pig, Primate, Sheep, Xenopus
Format	Purified
Clonality	Monoclonal (mouse origin)
Isotype	Mouse IgG1, k
Clone Name	137CT26.1.1
Purity	Purified
UniProt	P60709
Applications	Immunohistochemistry (Paraffin) : 1:10-1:50 Immunofluorescence : 1:10-1:50 Western Blot : 1:1000 Flow Cytometry : 1:25
Limitations	This b-Actin antibody is available for research use only.



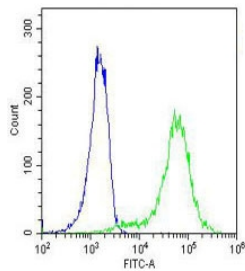
Western blot analysis of b-Actin antibody in 1) human K562, 2) human HL-60, 3) human HeLa cell line, and mouse tissues 4) spleen, 5) liver, 6) mouse NIH3T3 cell lysate, 7) mouse cerebellum and 8) mouse brain tissue lysate. Predicted molecular weight ~42 kDa.



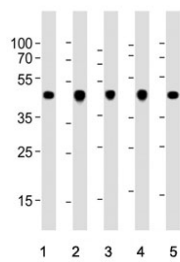
Immunohistochemical analysis of paraffin-embedded human spleen using b-Actin antibody at 1:25 dilution.



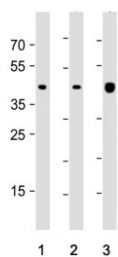
Confocal immunofluorescent analysis of b-Actin antibody with HeLa cells followed by Alexa Fluor 488-conjugated goat anti-mouse IgG (green). DAPI was used as a nuclear counterstain (blue).



Flow cytometry testing of human HeLa cells with b-Actin antibody; Blue=isotype control, Green= b-Actin antibody.



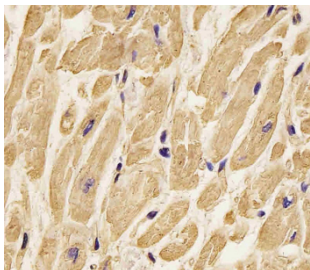
Western blot testing of 1) human A431, 2) rat C2C12, 3) rat C6, 4) human HeLa and 5) human MCF7 cell lysate with b-Actin antibody. Predicted molecular weight ~42 kDa.



Western blot testing of 1) human HeLa, 2) human HepG2 and 3) mouse NIH 3T3 cell lysate with b-Actin antibody. Predicted molecular weight ~42 kDa.



IHC staining of FFPE human skeletal muscle tissue with b-Actin antibody. HIER: steam section in pH6 citrate buffer for 20 min and allow to cool prior to staining.



IHC staining of FFPE human heart tissue with b-Actin antibody. HIER: steam section in pH6 citrate buffer for 20 min and allow to cool prior to staining.

Description

This gene encodes one of six different actin proteins. Actins are highly conserved proteins that are involved in cell motility, structure, and integrity. This actin is a major constituent of the contractile apparatus. It is classically referred to as being a 'nonmuscle' actin, however expression is ubiquitous, strongly in lymph tissue and weakly in heart and muscle.

Application Notes

Titration of the b-Actin antibody may be required due to differences in protocols and secondary/substrate sensitivity.

Immunogen

This b-Actin antibody was produced from a mouse immunized with ACTB recombinant protein.

Storage

Aliquot the b-Actin antibody and store frozen at -20oC or colder. Avoid repeated freeze-thaw cycles.