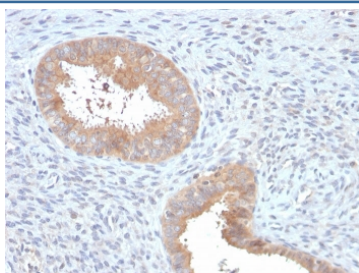


ATG5 Antibody [clone ATG5/2553] (V8240)

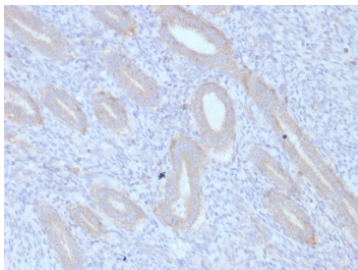
Catalog No.	Formulation	Size
V8240-100UG	0.2 mg/ml in 1X PBS with 0.1 mg/ml BSA (US sourced) and 0.05% sodium azide	100 ug
V8240-20UG	0.2 mg/ml in 1X PBS with 0.1 mg/ml BSA (US sourced) and 0.05% sodium azide	20 ug
V8240SAF-100UG	1 mg/ml in 1X PBS; BSA free, sodium azide free	100 ug

Bulk quote request

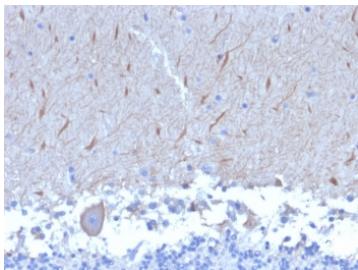
Availability	1-3 business days
Species Reactivity	Human
Format	Purified
Clonality	Monoclonal (mouse origin)
Isotype	Mouse IgG1, kappa
Clone Name	ATG5/2553
Purity	Protein G affinity chromatography
UniProt	Q9H1Y0
Localization	Cytoplasmic
Applications	ELISA (order BSA-free Format For Coating) : Western Blot : 1-2ug/ml Immunohistochemistry (FFPE) : 1-2ug/ml
Limitations	This ATG5 antibody is available for research use only.



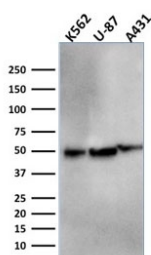
IHC staining of FFPE human uterus with ATG5 antibody. HIER: boil tissue sections in pH 9 10mM Tris with 1mM EDTA for 10-20 min and allow to cool before testing.



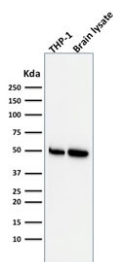
IHC staining of FFPE human endometrium with ATG5 antibody. HIER: boil tissue sections in pH 9 10mM Tris with 1mM EDTA for 10-20 min and allow to cool before testing.



IHC staining of FFPE human brain with ATG5 antibody. HIER: boil tissue sections in pH 9 10mM Tris with 1mM EDTA for 10-20 min and allow to cool before testing.



Western blot testing of human K562, U-87 and A431 cell lysate with ATG5 antibody. Predicted molecular weight ATG5: ~32 kDa; ATG5/ATG12 heterodimer: ~56 kDa.



Western blot testing of human ThP1 and brain lysate with ATG5 antibody. Predicted molecular weight ATG5: ~32 kDa; ATG5/ATG12 heterodimer: ~56 kDa.

Description

The protein encoded by this gene, in combination with autophagy protein 12, functions as an E1-like activating enzyme in a ubiquitin-like conjugating system. The encoded protein is involved in several cellular processes, including autophagic vesicle formation, mitochondrial quality control after oxidative damage, negative regulation of the innate antiviral immune response, lymphocyte development and proliferation, MHC II antigen presentation, adipocyte differentiation, and apoptosis. The ATG5 protein is essential for autophagy; a process that is usually beneficial for cells to self-degrade their own components when they are no longer useful.

Application Notes

Optimal dilution of the ATG5 antibody should be determined by the researcher.

Immunogen

A recombinant human partial protein (amino acids 1-119) was used as the immunogen for the ATG5 antibody.

Storage

Store the ATG5 antibody at 2-8°C (with azide) or aliquot and store at -20°C or colder (without azide).

