

ATF6 Antibody (F51282)

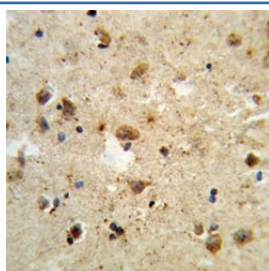
| Catalog No. | Formulation | Size |
|---------------|--|---------|
| F51282-0.4ML | In 1X PBS, pH 7.4, with 0.09% sodium azide | 0.4 ml |
| F51282-0.08ML | In 1X PBS, pH 7.4, with 0.09% sodium azide | 0.08 ml |

[Bulk quote request](#)

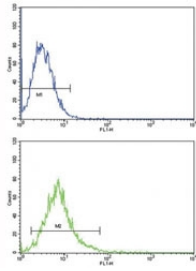
| | |
|-----------------------------|---|
| Availability | 1-3 business days |
| Species Reactivity | Human |
| Predicted Reactivity | Mouse, Rat |
| Format | Antigen affinity purified |
| Clonality | Polyclonal (rabbit origin) |
| Isotype | Rabbit Ig |
| Purity | Antigen affinity |
| UniProt | P18850 |
| Applications | Western Blot : 1:1000 IHC (Paraffin) : 1:10-1:50 Flow Cytometry : 1:10-1:50 |
| Limitations | This ATF6 antibody is available for research use only. |

130
 72
 55
 43
 34
 26
 17

Western blot analysis of ATF6 antibody and A2058 lysate. Predicted molecular weight: 75~90kDa.



IHC analysis of FFPE human brain tissue stained with ATF6 antibody



ATF6 antibody flow cytometric analysis of K562 cells (bottom histogram) compared to a negative control (top histogram). FITC-conjugated goat-anti-rabbit secondary Ab was used for the analysis.

Description

ATF6 is an endoplasmic reticulum (ER) stress-regulated transmembrane transcription factor that activates the transcription of ER molecules.

Application Notes

Titration of the ATF6 antibody may be required due to differences in protocols and secondary/substrate sensitivity.

Immunogen

A portion of amino acids 350-377 from the human protein was used as the immunogen for this ATF6 antibody.

Storage

Aliquot the ATF6 antibody and store frozen at -20oC or colder. Avoid repeated freeze-thaw cycles.