

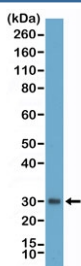
## Asprosin Antibody [clone RM463] (R20475)

Catalog No.	Formulation	Size
R20475-0.1ML	Antibody in PBS with 50% glycerol, 1% BSA and 0.09% sodium azide	100 ul

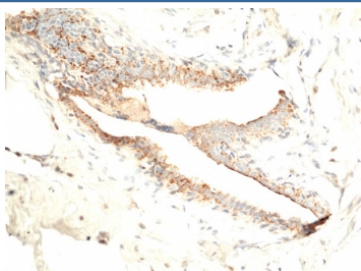
Recombinant **RABBIT MONOCLONAL**

[Bulk quote request](#)

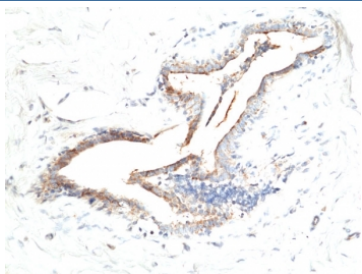
Availability	1-3 business days
Species Reactivity	Human
Format	Purified
Clonality	Recombinant Rabbit Monoclonal
Isotype	Rabbit IgG
Clone Name	RM463
Purity	Protein A purified from animal origin-free supernatant
UniProt	P35555
Applications	Immunohistochemistry (FFPE) : 1:100-1:200 Western Blot : 1:1000-1:25000
Limitations	This recombinant Asprosin antibody is available for research use only.



Western blot testing of human plasma with recombinant Asprosin antibody at 1:25000. Predicted molecular weight ~16 kDa but may be observed at higher molecular weights due to glycosylation.



IHC staining of FFPE human breast tissue with recombinant Asprosin antibody at 1:100.



IHC staining of FFPE human breast tissue with recombinant Asprosin antibody at 1:100.

## Description

This antibody reacts to human Asprosin.

## Application Notes

The stated application concentrations are suggested starting points. Titration of the recombinant Asprosin antibody may be required due to differences in protocols and secondary/substrate sensitivity.

## Immunogen

Recombinant full-length human Asprosin protein was used as the immunogen for the recombinant Asprosin antibody.

## Storage

Store the recombinant Asprosin antibody at -20oC.