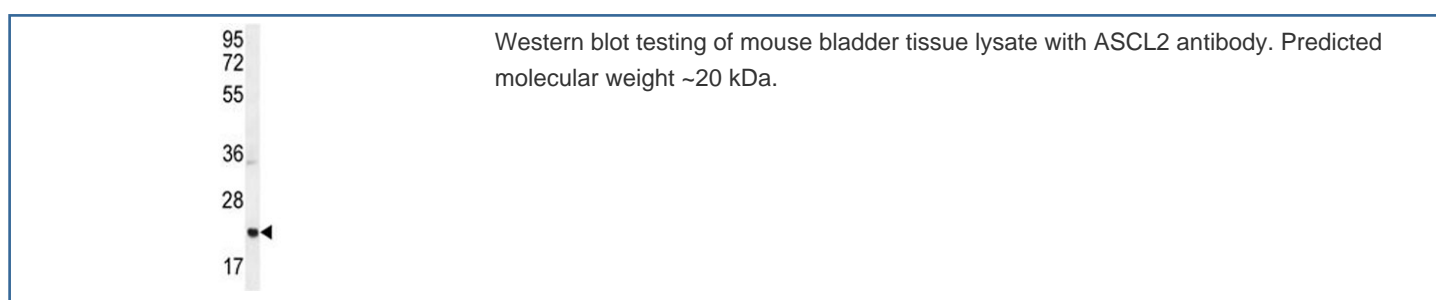


## ASCL2 Antibody / Achaete-scute homolog 2 (F55126)

Catalog No.	Formulation	Size
F55126-0.4ML	In 1X PBS, pH 7.4, with 0.09% sodium azide	0.4 ml
F55126-0.08ML	In 1X PBS, pH 7.4, with 0.09% sodium azide	0.08 ml

[Bulk quote request](#)

<b>Availability</b>	1-2 business days
<b>Species Reactivity</b>	Human, Mouse
<b>Format</b>	Antigen affinity purified
<b>Clonality</b>	Polyclonal (rabbit origin)
<b>Isotype</b>	Rabbit Ig
<b>Purity</b>	Antigen affinity
<b>UniProt</b>	Q96QA5
<b>Applications</b>	Western Blot : 1:500-1:1000
<b>Limitations</b>	This ASCL2 antibody is available for research use only.



### Description

ASCL2 belongs to a family of genes that are involved in determining cell fate and differentiation, particularly in the development of tissues such as the nervous system and the intestines. Studies have shown that ASCL2 plays a critical role in regulating the self-renewal and differentiation of stem cells, making it a key player in tissue regeneration and repair processes. One of the most fascinating aspects of ASCL2 is its ability to control the expression of other genes, essentially acting as a master regulator in the cellular development process. By activating or repressing specific genes, ASCL2 can influence the fate of a cell and dictate its ultimate function within a tissue or organ. ASCL2 has been implicated in a variety of diseases and conditions, including certain types of cancers where its dysregulation can lead to uncontrolled cell growth and proliferation.

## Application Notes

The stated application concentrations are suggested starting amounts. Titration of the ASCL2 antibody may be required due to differences in protocols and secondary/substrate sensitivity.

## Immunogen

A portion of amino acids 38-65 from the human protein was used as the immunogen for this ASCL2 antibody.

## Storage

Store at 4oC for up to one month. For long term, aliquot the ASCL2 antibody and store frozen at -20oC or colder. Avoid repeated freeze-thaw cycles.