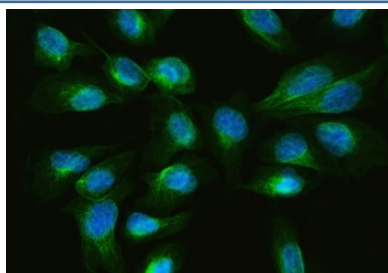


## ARL13B Antibody / ADP-ribosylation factor-like protein 13B (RQ7349)

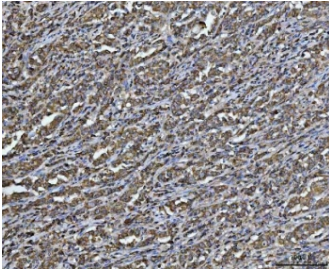
Catalog No.	Formulation	Size
RQ7349	0.5mg/ml if reconstituted with 0.2ml sterile DI water	100 ug

**Bulk quote request**

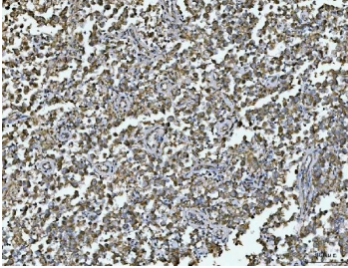
<b>Availability</b>	1-3 business days
<b>Species Reactivity</b>	Human, Mouse, Rat
<b>Format</b>	Antigen affinity purified
<b>Clonality</b>	Polyclonal (rabbit origin)
<b>Isotype</b>	Rabbit IgG
<b>Purity</b>	Antigen affinity purified
<b>Buffer</b>	Lyophilized from 1X PBS with 2% Trehalose
<b>UniProt</b>	Q3SXY8
<b>Localization</b>	Cilium membrane, cytoplasmic
<b>Applications</b>	Western Blot : 0.5-1ug/ml Immunohistochemistry (FFPE) : 2-5ug/ml Immunofluorescence : 5ug/ml Flow Cytometry : 1-3ug/million cells Direct ELISA : 0.1-0.5ug/ml
<b>Limitations</b>	This ARL13B antibody is available for research use only.



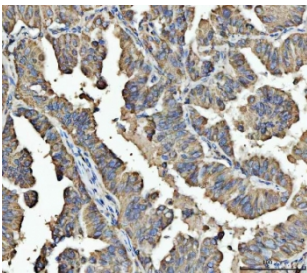
Immunofluorescent staining of FFPE human U-2 OS cells with ARL13B antibody (green) and DAPI nuclear stain (blue). HIER: steam section in pH6 citrate buffer for 20 min.



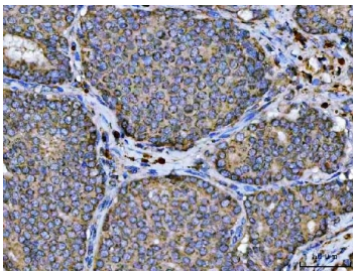
IHC staining of FFPE human gastric carcinoma tissue with ARL13B antibody. HIER: boil tissue sections in pH8 EDTA for 20 min and allow to cool before testing.



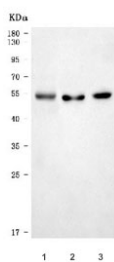
IHC staining of FFPE human testicular carcinoma tissue with ARL13B antibody. HIER: boil tissue sections in pH8 EDTA for 20 min and allow to cool before testing.



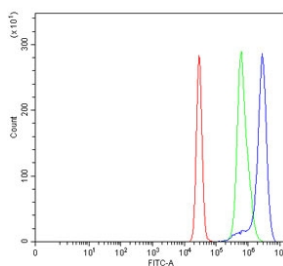
IHC staining of FFPE human colorectal adenocarcinoma tissue with ARL13B antibody. HIER: boil tissue sections in pH8 EDTA for 20 min and allow to cool before testing.



IHC staining of FFPE human breast cancer tissue with ARL13B antibody. HIER: boil tissue sections in pH8 EDTA for 20 min and allow to cool before testing.



Western blot testing of 1) human 293T, 2) rat brain and 3) mouse brain tissue lysate with ARL13B antibody. Predicted molecular weight: 37-49 kDa (multiple isoforms).



Flow cytometry testing of human K562 cells with ARL13B antibody at 1ug/million cells (blocked with goat sera); Red=cells alone, Green=isotype control, Blue= ARL13B antibody.

## Description

ADP-ribosylation factor-like protein 13B (ARL13B), also known as ADP-ribosylation factor-like protein 2-like 1 (ARL2L1), is a protein that in humans is encoded by the ARL13B gene. This gene encodes a member of the ADP-ribosylation factor-like family. The encoded protein is a small GTPase that contains both N-terminal and C-terminal guanine nucleotide-binding motifs. This protein is localized in the cilia and plays a role in cilia formation and in maintenance of cilia. Mutations in this gene are the cause of Joubert syndrome 8. Alternate splicing results in multiple transcript variants.

## Application Notes

Optimal dilution of the ARL13B antibody should be determined by the researcher.

## Immunogen

Recombinant human protein (amino acids R16-S428) was used as the immunogen for the ARL13B antibody.

## Storage

After reconstitution, the ARL13B antibody can be stored for up to one month at 4°C. For long-term, aliquot and store at -20°C. Avoid repeated freezing and thawing.