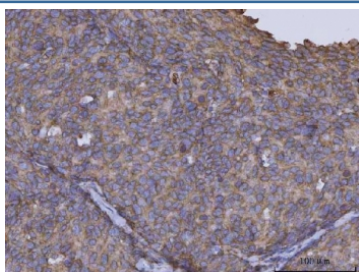


ARL1 Antibody / ADP-ribosylation factor-like protein 1 (RQ7339)

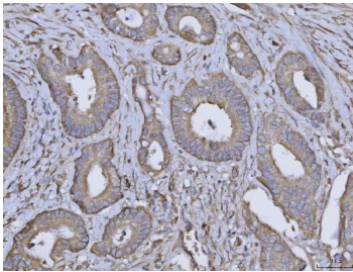
Catalog No.	Formulation	Size
RQ7339	0.5mg/ml if reconstituted with 0.2ml sterile DI water	100 ug

Bulk quote request

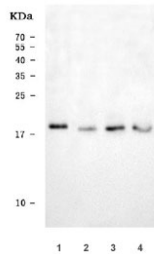
Availability	1-3 business days
Species Reactivity	Human
Format	Antigen affinity purified
Clonality	Polyclonal (rabbit origin)
Isotype	Rabbit IgG
Purity	Antigen affinity purified
Buffer	Lyophilized from 1X PBS with 2% Trehalose
UniProt	P40616
Localization	Cytoplasmic (Golgi)
Applications	Western Blot : 0.5-1ug/ml Immunohistochemistry (FFPE) : 2-5ug/ml Flow Cytometry : 1-3ug/million cells Immunofluorescence : 5ug/ml
Limitations	This ARL1 antibody is available for research use only.



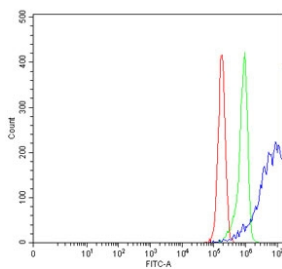
IHC staining of FFPE human cervical cancer tissue with ARL1 antibody. HIER: boil tissue sections in pH8 EDTA for 20 min and allow to cool before testing.



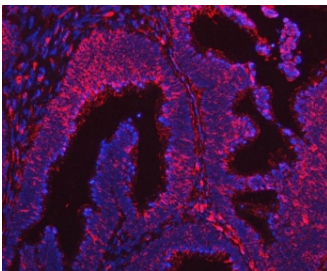
IHC staining of FFPE human colorectal adenocarcinoma tissue with ARL1 antibody. HIER: boil tissue sections in pH8 EDTA for 20 min and allow to cool before testing.



Western blot testing of human 1) K562, 2) HeLa, 3) HepG2, 4) RT4 cell lysate with ARL1 antibody. Predicted molecular weight ~20 kDa.



Flow cytometry testing of human RT4 cells with ARL1 antibody at 1ug/million cells (blocked with goat sera); Red=cells alone, Green=isotype control, Blue= ARL1 antibody.



Immunofluorescent staining of FFPE human colon cancer tissue with ARL1 antibody (red) and DAPI nuclear stain (blue). HIER: steam section in pH6 citrate buffer for 20 min.

Description

ADP-ribosylation factor-like protein 1 is a protein that in humans is encoded by the ARL1 gene. The protein encoded by this gene belongs to the ARL (ADP-ribosylation factor-like) family of proteins, which are structurally related to ADP-ribosylation factors (ARFs). ARFs, described as activators of cholera toxin (CT) ADP-ribosyltransferase activity, regulate intracellular vesicular membrane trafficking, and stimulate a phospholipase D (PLD) isoform. Although, ARL proteins were initially thought not to activate CT or PLD, later work showed that they are weak stimulators of PLD and CT in a phospholipid dependent manner. Alternative splicing results in multiple transcript variants encoding different isoforms.

Application Notes

Optimal dilution of the ARL1 antibody should be determined by the researcher.

Immunogen

Amino acids LDEAMEWLVELKSRQ were used as the immunogen for the ARL1 antibody.

Storage

After reconstitution, the ARL1 antibody can be stored for up to one month at 4°C. For long-term, aliquot and store at -20°C. Avoid repeated freezing and thawing.

