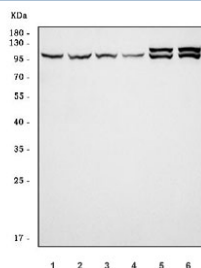


ARHGAP26 Antibody / GRAF (RQ7144)

Catalog No.	Formulation	Size
RQ7144	0.5mg/ml if reconstituted with 0.2ml sterile DI water	100 ug

Bulk quote request

Availability	1-3 business days
Species Reactivity	Human, Mouse, Rat
Format	Antigen affinity purified
Clonality	Polyclonal (rabbit origin)
Isotype	Rabbit IgG
Purity	Antigen affinity purified
Buffer	Lyophilized from 1X PBS with 2% Trehalose
UniProt	Q9UNA1
Applications	Western Blot : 0.5-1ug/ml Direct ELISA : 0.1-0.5ug/ml
Limitations	This ARHGAP26 antibody is available for research use only.



Western blot testing of 1) human HeLa, 2) human MCF7, 3) human RT4, 4) human U-251, 5) rat brain and 6) mouse brain tissue lysate with ARHGAP26 antibody. Predicted molecular weight ~92 kDa (isoform 1) and ~86 kDa (isoform 2).

Description

Rho GTPase activating protein 26 (ARHGAP26) also known as GTPase Regulator Associated with Focal Adhesion Kinase (GRAF) is a protein that in humans is encoded by the ARHGAP26 gene. Interaction of a cell with the extracellular matrix triggers integrin cell surface receptors to begin signaling cascades that regulate the organization of the actin-cytoskeleton. One of the proteins involved in these cascades is focal adhesion kinase. The protein encoded by this gene is a GTPase activating protein that binds to focal adhesion kinase and mediates the activity of the GTP binding proteins RhoA and Cdc42. Defects in this gene are a cause of juvenile myelomonocytic leukemia (JMML). Multiple transcript variants encoding different isoforms have been found for this gene.

Application Notes

Optimal dilution of the ARHGAP26 antibody should be determined by the researcher.

Immunogen

Recombinant human protein (amino acids S584-E791) was used as the immunogen for the ARHGAP26 antibody.

Storage

After reconstitution, the ARHGAP26 antibody can be stored for up to one month at 4°C. For long-term, aliquot and store at -20°C. Avoid repeated freezing and thawing.