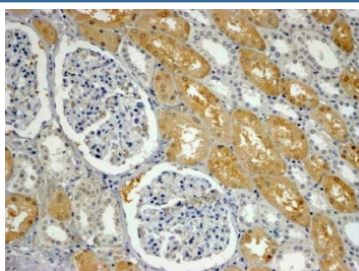


APXL Antibody / SHROOM2 (R34365)

Catalog No.	Formulation	Size
R34365-100UG	0.5 mg/ml in 1X TBS, pH7.3, with 0.5% BSA (US sourced) and 0.02% sodium azide	100 ug

[Bulk quote request](#)

Availability	1-3 business days
Species Reactivity	Human
Predicted Reactivity	Cow
Format	Antigen affinity purified
Clonality	Polyclonal (goat origin)
Isotype	Goat Ig
Purity	Antigen affinity
Gene ID	357
Applications	Immunohistochemistry (FFPE) : 4-6ug/ml ELISA (peptide) LOD : 1:32000
Limitations	This APXL antibody is available for research use only.



IHC testing of FFPE human kidney with APXL antibody at 4ug/ml. HIER: steamed with pH9 Tris/EDTA buffer, HRP-staining.

Description

Additional name(s) for this target protein: HSAPXL, Apical protein-like; SHROOM2

Application Notes

Optimal dilution of the APXL antibody should be determined by the researcher.

Immunogen

Amino acids KCLLDLQPERGK were used as the immunogen for this APXL antibody.

Storage

Aliquot and store the APXL antibody at -20oC.