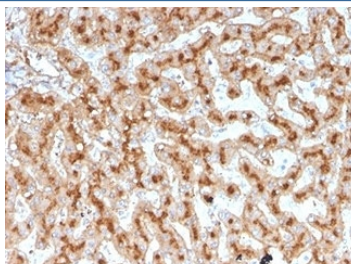


## Apolipoprotein E Antibody / APOE [clone APOE/3671] (V9533)

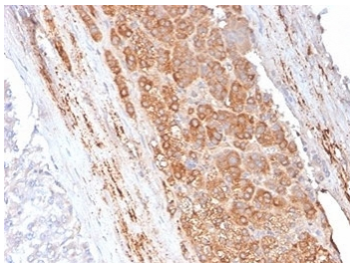
Catalog No.	Formulation	Size
V9533-100UG	0.2 mg/ml in 1X PBS with 0.1 mg/ml BSA (US sourced), 0.05% sodium azide	100 ug
V9533-20UG	0.2 mg/ml in 1X PBS with 0.1 mg/ml BSA (US sourced), 0.05% sodium azide	20 ug
V9533SAF-100UG	1 mg/ml in 1X PBS; BSA free, sodium azide free	100 ug

[Bulk quote request](#)

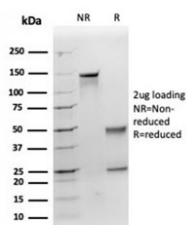
<b>Availability</b>	1-3 business days
<b>Species Reactivity</b>	Human
<b>Format</b>	Purified
<b>Clonality</b>	Monoclonal (mouse origin)
<b>Isotype</b>	Mouse IgG1, kappa
<b>Clone Name</b>	APOE/3671
<b>Purity</b>	Protein A/G affinity
<b>UniProt</b>	P02649
<b>Localization</b>	Secreted
<b>Applications</b>	Immunohistochemistry (FFPE) : 1-2ug/ml Western Blot : 2-4ug/ml
<b>Limitations</b>	This Apolipoprotein E antibody is available for research use only.



IHC staining of FFPE human liver tissue with Apolipoprotein E (clone APOE) antibody (clone APOE/3671). HIER: boil tissue sections in pH 9 10mM Tris with 1mM EDTA for 20 min and allow to cool before testing.

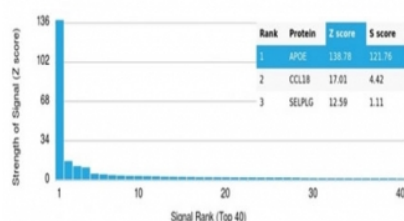


IHC staining of FFPE human adrenal gland with Apolipoprotein E antibody (clone APOE/3671). HIER: boil tissue sections in pH 9 10mM Tris with 1mM EDTA for 20 min and allow to cool before testing.

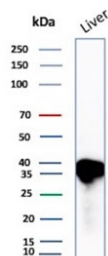


SDS-PAGE analysis of purified, BSA-free Apolipoprotein E antibody (clone APOE/3671) as confirmation of integrity and purity.

Human Protein Microarray Specificity Validation



Analysis of HuProt(TM) microarray containing more than 19,000 full-length human proteins using Apolipoprotein E antibody (clone APOE/3671). These results demonstrate the foremost specificity of the APOE/3671 mAb. Z- and S- score: The Z-score represents the strength of a signal that an antibody (in combination with a fluorescently-tagged anti-IgG secondary Ab) produces when binding to a particular protein on the HuProt(TM) array. Z-scores are described in units of standard deviations (SD's) above the mean value of all signals generated on that array. If the targets on the HuProt(TM) are arranged in descending order of the Z-score, the S-score is the difference (also in units of SD's) between the Z-scores. The S-score therefore represents the relative target specificity of an Ab to its intended target.



Western blot testing of human liver tissue lysate with Apolipoprotein E antibody. Predicted molecular weight: 34-37 kDa.

## Description

APOE is an apolipoprotein, a protein associating with lipid particles, that mainly functions in lipoprotein-mediated lipid transport between organs via the plasma and interstitial fluids. [UniProt]

## Application Notes

Optimal dilution of the Apolipoprotein E antibody should be determined by the researcher.

## Immunogen

A portion of amino acids 19-119 from the human protein was used as the immunogen for the Apolipoprotein E antibody.

## Storage

Aliquot the Apolipoprotein E antibody and store frozen at -20°C or colder. Avoid repeated freeze-thaw cycles.

