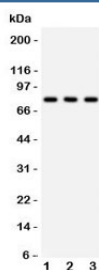


APG7 Antibody (R31845)

Catalog No.	Formulation	Size
R31845	0.5mg/ml if reconstituted with 0.2ml sterile DI water	100 ug

Bulk quote request

Availability	1-3 business days
Species Reactivity	Human, Mouse, Rat
Format	Antigen affinity purified
Clonality	Polyclonal (rabbit origin)
Isotype	Rabbit IgG
Purity	Antigen affinity
Buffer	Lyophilized from 1X PBS with 2.5% BSA and 0.025% sodium azide
UniProt	O95352
Applications	Western Blot : 0.1-0.5ug/ml
Limitations	This APG7 antibody is available for research use only.



Western blot testing of 1) rat brain, 2) mouse brain and 3) human 293 lysate with APG7 antibody. Predicted molecular weight: 70-80 kDa.

Description

Autophagy-related protein 7 is a protein that in humans is encoded by the ATG7 gene. It is mapped to 3p25.3. This gene was identified based on homology to *Pichia pastoris* GSA7 and *Saccharomyces cerevisiae* APG7. In the yeast, the protein appears to be required for fusion of peroxisomal and vacuolar membranes. The protein also shows homology to the ATP-binding and catalytic sites of the E1 ubiquitin activating enzymes. ATG7 is essential for the Apg12 conjugation system that mediates membrane fusion in autophagy. It is found that when nutrients are limited, ATG7 can regulate p53-dependent cell cycle and cell death pathways.

Application Notes

Optimal dilution of the APG7 antibody should be determined by the researcher.

Immunogen

Amino acids HSFLEDLTGLTLLHQETQAAEIWDMSDDETI of human APG7 were used as the immunogen for the APG7 antibody.

Storage

After reconstitution, the APG7 antibody can be stored for up to one month at 4oC. For long-term, aliquot and store at -20oC. Avoid repeated freezing and thawing.