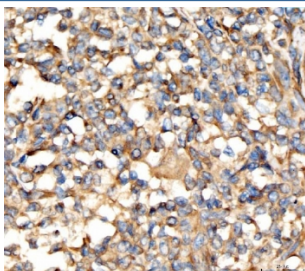


AP2A2 Antibody / AP-2 complex subunit alpha-2 (RQ6600)

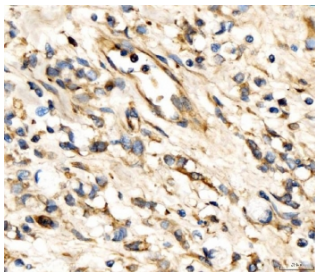
Catalog No.	Formulation	Size
RQ6600	0.5mg/ml if reconstituted with 0.2ml sterile DI water	100 ug

Bulk quote request

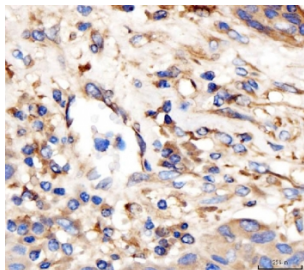
Availability	1-3 business days
Species Reactivity	Human, Mouse, Rat
Format	Antigen affinity purified
Clonality	Polyclonal (rabbit origin)
Isotype	Rabbit IgG
Purity	Antigen affinity purified
Buffer	Lyophilized from 1X PBS with 2% Trehalose
UniProt	O94973
Localization	Cytoplasmic, nuclear, cell membrane
Applications	Western Blot : 1-2ug/ml Immunohistochemistry (FFPE) : 2-5ug/ml Immunofluorescence (FFPE) : 5ug/ml Flow Cytometry : 1-3ug/million cells Direct ELISA : 0.1-0.5ug/ml
Limitations	This AP2A2 antibody is available for research use only.



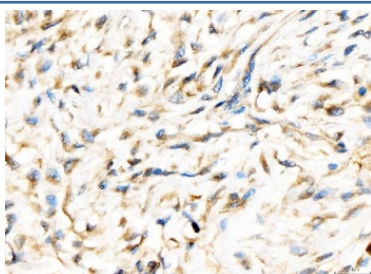
IHC staining of FFPE human lymphoma tissue with AP2A2 antibody. HIER: boil tissue sections in pH8 EDTA for 20 min and allow to cool before testing.



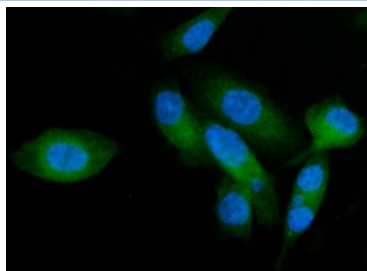
IHC staining of FFPE human stomach cancer tissue with AP2A2 antibody. HIER: boil tissue sections in pH8 EDTA for 20 min and allow to cool before testing.



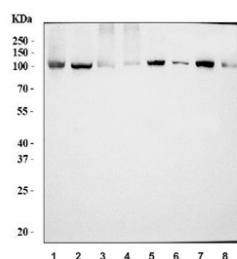
IHC staining of FFPE human liver cancer tissue with AP2A2 antibody. HIER: boil tissue sections in pH8 EDTA for 20 min and allow to cool before testing.



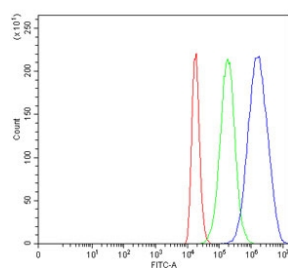
IHC staining of FFPE human breast cancer tissue with AP2A2 antibody. HIER: boil tissue sections in pH8 EDTA for 20 min and allow to cool before testing.



Immunofluorescent staining of FFPE human PC-3 cells with AP2A2 antibody (green) and DAPI nuclear stain (blue). HIER: steam section in pH6 citrate buffer for 20 min.



Western blot testing of 1) human HepG2, 2) human HEK293, 3) human PC-3, 4) human SH-SY5Y, 5) rat brain, 6) rat lung, 7) mouse brain and 8) mouse lung tissue lysate with AP2A2 antibody. Predicted molecular weight ~104 kDa.



Flow cytometry testing of human 293T cells with AP2A2 antibody at 1ug/million cells (blocked with goat sera); Red=cells alone, Green=isotype control, Blue= AP2A2 antibody.

Description

AP-2 complex subunit alpha-2 is a protein that in humans is encoded by the AP2A2 gene. The protein encoded by this gene is a subunit of the AP-2 adaptor protein complex, which is involved in linking lipid and protein membrane components with the clathrin lattice. This interaction supports the formation of clathrin-coated vesicles, and the encoded subunit aids in the process by binding polyphosphoinositide-containing lipids in the cell membrane.

Application Notes

Optimal dilution of the AP2A2 antibody should be determined by the researcher.

Immunogen

Recombinant human protein (amino acids D686-K825) was used as the immunogen for the AP2A2 antibody.

Storage

After reconstitution, the AP2A2 antibody can be stored for up to one month at 4°C. For long-term, aliquot and store at -20°C. Avoid repeated freezing and thawing.