

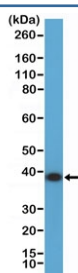
ANXA1 Antibody / Annexin A1 [clone RM424] (R20438)

Catalog No.	Formulation	Size
R20438-0.1ML	Antibody in PBS with 50% glycerol, 1% BSA and 0.09% sodium azide	100 ul

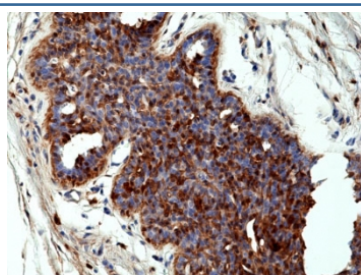
Recombinant **RABBIT MONOCLONAL**

[Bulk quote request](#)

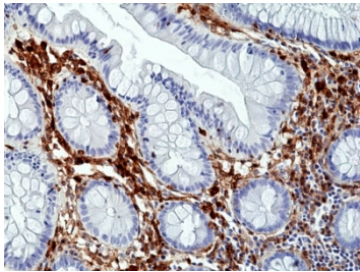
Availability	1-3 business days
Species Reactivity	Human
Format	Purified
Clonality	Recombinant Rabbit Monoclonal
Isotype	Rabbit IgG
Clone Name	RM424
Purity	Protein A purified from animal origin-free supernatant
UniProt	P04083
Localization	Cell surface, cytoplasmic, nuclear
Applications	Immunohistochemistry (FFPE) : 1:50-1:100 Western Blot : 1:1000-1:2000
Limitations	This recombinant ANXA1 antibody is available for research use only.



Western blot testing of human K562 cell lysate with recombinant ANXA1 antibody at 1:2000 dilution. Predicted molecular weight ~36 kDa.



IHC staining of FFPE human breast cancer tissue with recombinant ANXA1 antibody at 1:100.



IHC staining of FFPE human colon tissue with recombinant ANXA1 antibody at 1:100.

Description

This antibody reacts to human Annexin A1.

Application Notes

The stated application concentrations are suggested starting points. Titration of the recombinant ANXA1 antibody may be required due to differences in protocols and secondary/substrate sensitivity.

Immunogen

A peptide corresponding to the N-terminus of human Annexin A1 was used as the immunogen for the recombinant ANXA1 antibody.

Storage

Store the recombinant ANXA1 antibody at -20oC.