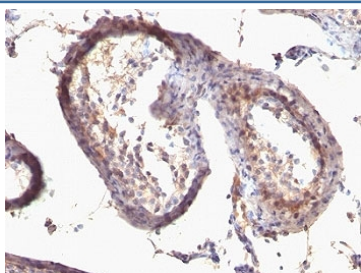


Anti-TGF-alpha Antibody [clone SPM542] (V9086)

Catalog No.	Formulation	Size
V9086-100UG	0.2 mg/ml in 1X PBS with 0.1 mg/ml BSA (US sourced) and 0.05% sodium azide	100 ug
V9086-20UG	0.2 mg/ml in 1X PBS with 0.1 mg/ml BSA (US sourced) and 0.05% sodium azide	20 ug
V9086SAF-100UG	1 mg/ml in 1X PBS; BSA free, sodium azide free	100 ug

[Bulk quote request](#)

Availability	1-3 business days
Species Reactivity	Human
Format	Purified
Clonality	Monoclonal (mouse origin)
Isotype	Mouse IgM, kappa
Clone Name	SPM542
Purity	Precipitated followed by dialysis in 1X PBS
UniProt	P01135
Localization	Cytoplasmic and Extracellular (secreted)
Applications	Immunohistochemistry (FFPE) : 1-2ug/ml for 30 min at RT
Limitations	This anti-TGF-alpha antibody is available for research use only.



IHC: Formalin-fixed, paraffin-embedded human testicular carcinoma stained with anti-TGF alpha antibody (clone SPM542).

Description

This antibody reacts with the TGF alpha and shows no cross-reaction with EGF and the neuropeptide synenkephalin. TGFa is a growth factor with 33% homology to EGF, binds to EGFR, activates tyrosine phosphorylation of the receptor,

and stimulates cell proliferation. It plays a role in tumor initiation by inducing the reversible transformed phenotype.

Application Notes

The optimal dilution of the anti-TGF-alpha antibody for each application should be determined by the researcher.

1. Staining of formalin-fixed tissues requires boiling tissue sections in pH 9 10mM Tris with 1mM EDTA for 10-20 min followed by cooling at RT for 20 minutes.

Immunogen

Amino acids 34-43 (PPVAAAVVSH) from the human protein were used as the immunogen for this anti-TGF alpha antibody.

Storage

Store the anti-TGF-alpha antibody at 2-8oC (with azide) or aliquot and store at -20oC or colder (without azide).