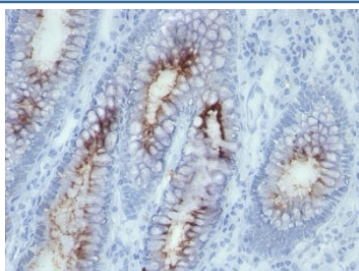


## Anti-CEA Antibody / CEACAM5 [clone SPM506] (V2447)

Catalog No.	Formulation	Size
V2447-100UG	0.2 mg/ml in 1X PBS with 0.1 mg/ml BSA (US sourced) and 0.05% sodium azide	100 ug
V2447-20UG	0.2 mg/ml in 1X PBS with 0.1 mg/ml BSA (US sourced) and 0.05% sodium azide	20 ug
V2447SAF-100UG	1 mg/ml in 1X PBS; BSA free, sodium azide free	100 ug
V2447IHC-7ML	Prediluted in 1X PBS with 0.1 mg/ml BSA (US sourced) and 0.05% sodium azide; *For IHC use only*	7 ml

**Bulk quote request**

<b>Availability</b>	1-3 business days
<b>Species Reactivity</b>	Human
<b>Format</b>	Purified
<b>Clonality</b>	Monoclonal (mouse origin)
<b>Isotype</b>	Mouse IgG1, kappa
<b>Clone Name</b>	SPM506
<b>Purity</b>	Protein G affinity chromatography
<b>UniProt</b>	P06731
<b>Localization</b>	Cytoplasmic and luminal surface
<b>Applications</b>	Immunohistochemistry (FFPE) : 1-2ug/ml for 30 min at RT
<b>Limitations</b>	This anti-CEA antibody is available for research use only.



IHC: Formalin-fixed, paraffin-embedded human colon carcinoma stained with anti-CEA antibody (SPM506)

## Description

CEA is synthesized during development in the fetal gut and is re-expressed in increased amounts in intestinal carcinomas and several other tumors. Antibody to CEA is useful in detecting early foci of gastric carcinoma and in distinguishing pulmonary adenocarcinomas (60-70% are CEA+) from pleural mesotheliomas (rarely or weakly CEA+). Anti-CEA positivity is seen in adenocarcinomas from the lung, colon, stomach, esophagus, pancreas, gallbladder, urachus, salivary gland, ovary, and endocervix.

## Application Notes

Optimal dilution of the anti-CEA antibody to be determined by the researcher.

1. Staining of formalin-fixed tissues requires boiling tissue sections in 10mM Tris with 1mM EDTA, pH 9.0, for 10-20 min followed by cooling at RT for 20 min
2. The prediluted format is supplied in a dropper bottle and is optimized for use in IHC. After epitope retrieval step (if required), drip mAb solution onto the tissue section and incubate at RT for 30 min.

## Immunogen

Human colon carcinoma extract was used as the immunogen for the anti-CEA antibody.

## Storage

Store the anti-CEA antibody at 2-8°C (with azide) or aliquot and store at -20°C or colder (without azide).