

Anti-AKT Antibody (F50140)

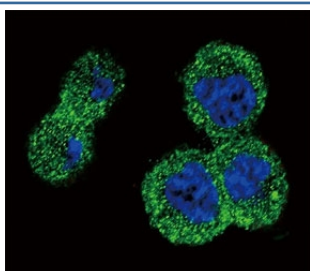
Catalog No.	Formulation	Size
F50140-0.4ML	In 1X PBS, pH 7.4, with 0.09% sodium azide	0.4 ml
F50140-0.08ML	In 1X PBS, pH 7.4, with 0.09% sodium azide	0.08 ml

[Bulk quote request](#)

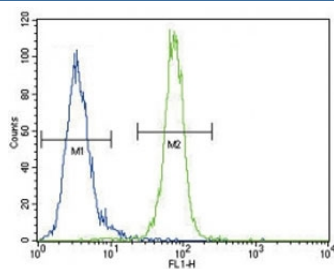
Availability	1-3 business days
Species Reactivity	Human
Predicted Reactivity	Bovine, Mouse, Rat
Format	Purified
Clonality	Polyclonal (rabbit origin)
Isotype	Rabbit Ig
Purity	Purified
UniProt	P31749
Applications	Western Blot : 1:1000 Immunofluorescence : 1:10-1:50 Flow Cytometry : 1:10-1:50
Limitations	This anti-AKT antibody is available for research use only.



Western blot analysis of anti-AKT antibody and MCF-7 lysate.



Confocal immunofluorescent analysis of anti-AKT antibody with MDA-MB435 cells followed by Alexa Fluor 488-conjugated goat anti-rabbit IgG (green). DAPI was used as a nuclear counterstain (blue).



Anti-AKT antibody flow cytometric analysis of MDA-MB435 cells (right histogram) compared to a negative control (left histogram). FITC-conjugated goat-anti-rabbit secondary Ab was used for the analysis.

Description

The serine-threonine protein kinase encoded by the AKT1 gene is catalytically inactive in serum-starved primary and immortalized fibroblasts. AKT1 and the related AKT2 are activated by platelet-derived growth factor. The activation is rapid and specific, and it is abrogated by mutations in the pleckstrin homology domain of AKT1. It was shown that the activation occurs through phosphatidylinositol 3-kinase. In the developing nervous system AKT is a critical mediator of growth factor-induced neuronal survival. Survival factors can suppress apoptosis in a transcription-independent manner by activating the serine/threonine kinase AKT1, which then phosphorylates and inactivates components of the apoptotic machinery.

Application Notes

Titration of the anti-AKT antibody may be required due to differences in protocols and secondary/substrate sensitivity.

Immunogen

A portion of amino acids 49-76 from human AKT1 was used as the immunogen for this anti-AKT antibody.

Storage

Aliquot the anti-AKT antibody and store frozen at -20oC or colder. Avoid repeated freeze-thaw cycles.