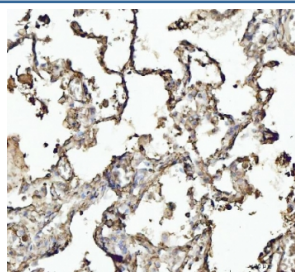


Annexin VI Antibody (RQ4425)

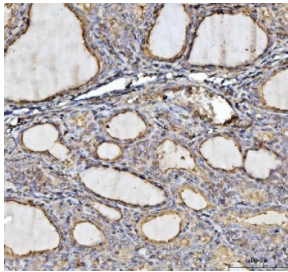
Catalog No.	Formulation	Size
RQ4425	0.5mg/ml if reconstituted with 0.2ml sterile DI water	100 ug

Bulk quote request

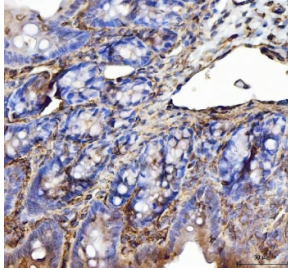
Availability	1-3 business days
Species Reactivity	Human, Mouse, Rat
Format	Antigen affinity purified
Clonality	Polyclonal (rabbit origin)
Isotype	Rabbit IgG
Purity	Antigen affinity purified
Buffer	Lyophilized from 1X PBS with 2% Trehalose
UniProt	P08133
Localization	Cytoplasmic
Applications	Western Blot : 0.5-1ug/ml Immunohistochemistry (FFPE) : 2-5ug/ml Flow Cytometry : 1-3ug/10 ⁶ cells Direct ELISA : 0.1-0.5ug/ml (recombinant human protein) (BSA-free format available)
Limitations	This Annexin VI antibody is available for research use only.



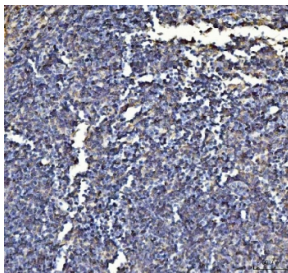
IHC testing of FFPE human lung cancer tissue with Annexin VI antibody. Required HIER: steam section in pH8 EDTA buffer for 20 min and allow to cool prior to staining.



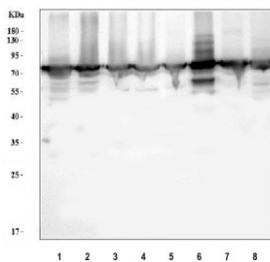
IHC testing of FFPE human thyroid cancer tissue with Annexin VI antibody. Required HIER: steam section in pH8 EDTA buffer for 20 min and allow to cool prior to staining.



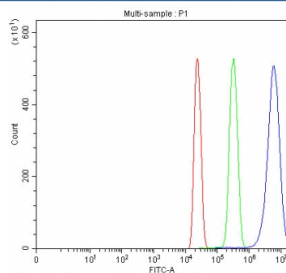
IHC testing of FFPE rat colon tissue with Annexin VI antibody. Required HIER: steam section in pH8 EDTA buffer for 20 min and allow to cool prior to staining.



IHC testing of FFPE mouse lymph tissue with Annexin VI antibody. Required HIER: steam section in pH8 EDTA buffer for 20 min and allow to cool prior to staining.



Western blot testing of 1) human placenta, 2) human Jurkat, 3) human HeLa, 4) human HepG2, 5) rat liver, 6) rat lung, 7) mouse liver and 8) mouse lung tissue lysate with Annexin VI antibody at 0.5ug/ml. Expected molecular weight: 67-76 kDa.



Flow cytometry testing of fixed and permeabilized human HL60 cells with Annexin VI antibody at 1ug/10⁶ cells (blocked with goat sera); Red=cells alone, Green=isotype control, Blue= Annexin VI antibody.

Description

Annexin A6 (ANXA6) is a member of a family of proteins that bind membrane or cytoskeleton in a Ca²⁺-dependent manner. These proteins are characterized by homologous amino acid sequences that are present in multiple copies in each protein. ANXA6 gene is assigned to 5q32-q34 by use of a cDNA clone to probe genomic DNA from rodent-human somatic cell hybrids and for in situ hybridization. The ANX6 gene is approximately 60 kb long and contains 26 exons. The genomic sequence at the 3-prime end does not contain a canonical polyadenylation signal. Ca²⁺-dependent binding between CRHSP28 and ANXA6 is required for acinar cell membrane trafficking events and digestive enzyme secretion.

Application Notes

Optimal dilution of the Annexin VI antibody should be determined by the researcher.

Immunogen

A human partial recombinant protein corresponding to amino acids N395-L665 was used as the immunogen for the Annexin VI antibody.

Storage

After reconstitution, the Annexin VI antibody can be stored for up to one month at 4°C. For long-term, aliquot and store at -20°C. Avoid repeated freezing and thawing.