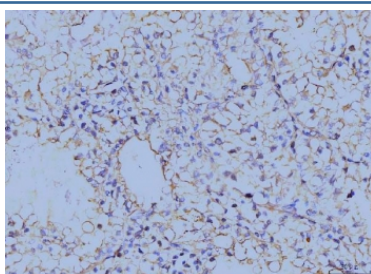


Annexin VI Antibody / ANXA6 [clone 4C4] (RQ6590)

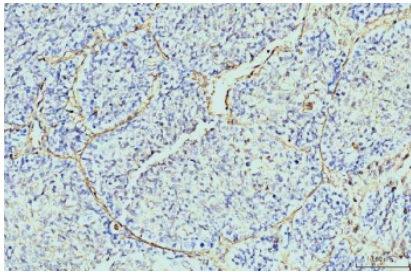
Catalog No.	Formulation	Size
RQ6590	0.5mg/ml if reconstituted with 0.2ml sterile DI water	100 ug

Bulk quote request

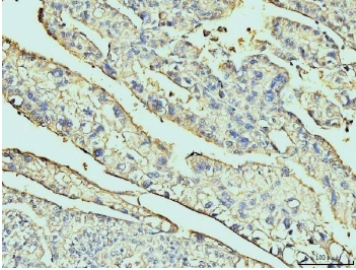
Availability	1-3 business days
Species Reactivity	Human, Mouse, Rat
Format	Antigen affinity purified
Clonality	Monoclonal (mouse origin)
Isotype	Mouse IgG2b
Clone Name	4C4
Purity	Antigen affinity purified
Buffer	Lyophilized from 1X PBS with 2% Trehalose
UniProt	P08133
Localization	Cytoplasmic
Applications	Western Blot : 1-2ug/ml Immunohistochemistry (FFPE) : 2-5ug/ml Immunofluorescence (FFPE) : 5ug/ml Flow Cytometry : 1-3ug/million cells
Limitations	This Annexin VI antibody is available for research use only.



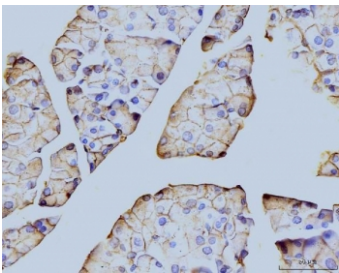
IHC staining of FFPE human renal clear cell carcinoma tissue with Annexin VI antibody.
HIER: boil tissue sections in pH8 EDTA for 20 min and allow to cool before testing.



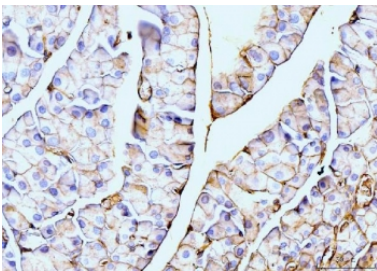
IHC staining of FFPE human lung cancer tissue with Annexin VI antibody. HIER: boil tissue sections in pH8 EDTA for 20 min and allow to cool before testing.



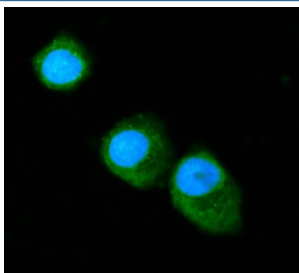
IHC staining of FFPE human liver tissue with Annexin VI antibody. HIER: boil tissue sections in pH8 EDTA for 20 min and allow to cool before testing.



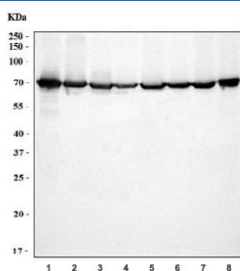
IHC staining of FFPE mouse pancreas tissue with Annexin VI antibody. HIER: boil tissue sections in pH8 EDTA for 20 min and allow to cool before testing.



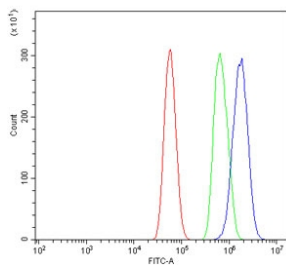
IHC staining of FFPE rat pancreas tissue with Annexin VI antibody. HIER: boil tissue sections in pH8 EDTA for 20 min and allow to cool before testing.



Immunofluorescent staining of FFPE human T-47D cells with Annexin VI antibody (green) and DAPI nuclear stain (blue). HIER: steam section in pH6 citrate buffer for 20 min.



Western blot testing of 1) human placenta, 2) human U-87 MG, 3) human HepG2, 4) human HeLa, 5) rat thymus, 6) rat pancreas, 7) mouse thymus and 8) mouse pancreas tissue lysate with Annexin VI antibody. Expected molecular weight: 67-76 kDa.



Flow cytometry testing of human U-87 MG cells with Annexin VI antibody at 1ug/million cells (blocked with goat sera); Red=cells alone, Green=isotype control, Blue= Annexin VI antibody.

Description

Annexin A6 (ANXA6) is a member of a family of proteins that bind membrane or cytoskeleton in a Ca(2+)-dependent manner. These proteins are characterized by homologous amino acid sequences that are present in multiple copies in each protein. ANXA6 gene is assigned to 5q32-q34 by use of a cDNA clone to probe genomic DNA from rodent-human somatic cell hybrids and for in situ hybridization. The ANX6 gene is approximately 60 kb long and contains 26 exons. The genomic sequence at the 3-prime end does not contain a canonical polyadenylation signal. Ca(2+)-dependent binding between CRHSP28 and ANXA6 is required for acinar cell membrane trafficking events and digestive enzyme secretion.

Application Notes

Optimal dilution of the Annexin VI antibody should be determined by the researcher.

Immunogen

Recombinant human protein (amino acids N395-L665) was used as the immunogen for the Annexin VI antibody.

Storage

After reconstitution, the Annexin VI antibody can be stored for up to one month at 4oC. For long-term, aliquot and store at -20oC. Avoid repeated freezing and thawing.