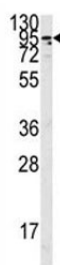


Angiotensin-converting enzyme 2 Antibody (F49434)

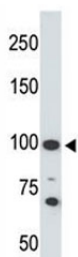
Catalog No.	Formulation	Size
F49434-0.4ML	In 1X PBS, pH 7.4, with 0.09% sodium azide	0.4 ml
F49434-0.08ML	In 1X PBS, pH 7.4, with 0.09% sodium azide	0.08 ml

[Bulk quote request](#)

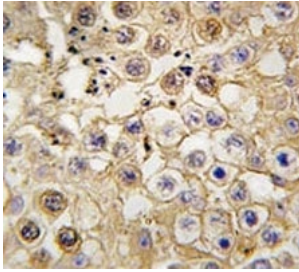
Availability	1-3 business days
Species Reactivity	Human
Format	Purified
Clonality	Polyclonal (rabbit origin)
Isotype	Rabbit Ig
Purity	Purified
UniProt	Q9BYF1
Applications	Western Blot : 1:1000 IHC (Paraffin) : 1:50-1:100 ELISA : peptide immunogen
Limitations	This Angiotensin-converting enzyme 2 antibody is available for research use only.



Western blot analysis of the Angiotensin-converting enzyme 2 antibody in K562 lysate.
Predicted molecular weight: 90-100 kDa.



Western blot testing of Angiotensin-converting enzyme 2 antibody and 293 cell lysate.
Predicted molecular weight: 90-100 kDa.



IHC analysis of FFPE human testis tissue stained with Angiotensin-converting enzyme 2 antibody

Description

ACE2 is expressed predominantly in vascular endothelial cells of the heart and kidney. ACE converts angiotensin I to angiotensin II, ACE2 converts angiotensin I to angiotensin 1-9, which has 9 amino acids. Angiotensin II is a potent blood vessel constrictor, while angiotensin 1-9 does not impact blood vessels but is cleaved by ACE to a shorter peptide, angiotensin 1-7, which is a blood vessel dilator.

Application Notes

Titration of the Angiotensin-converting enzyme 2 antibody may be required due to differences in protocols and secondary/substrate sensitivity.

Immunogen

A portion of amino acids 773-805 from the human protein was used as the immunogen for this Angiotensin-converting enzyme 2 antibody.

Storage

Aliquot the Angiotensin-converting enzyme 2 antibody and store frozen at -20oC or colder. Avoid repeated freeze-thaw cycles.