

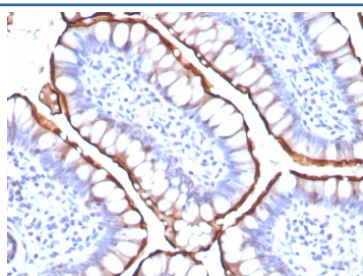
Angiotensin Converting Enzyme 2 Antibody / ACE2 [clone ACE2/8748R] (V5346)

Catalog No.	Formulation	Size
V5346-100UG	0.2 mg/ml in 1X PBS with 0.1 mg/ml BSA (US sourced), 0.05% sodium azide	100 ug
V5346-20UG	0.2 mg/ml in 1X PBS with 0.1 mg/ml BSA (US sourced), 0.05% sodium azide	20 ug
V5346SAF-100UG	1 mg/ml in 1X PBS; BSA free, sodium azide free	100 ug

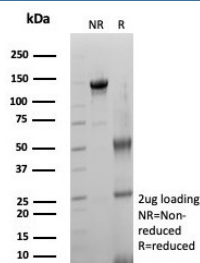
Recombinant **RABBIT MONOCLONAL**

[Bulk quote request](#)

Availability	1-3 business days
Species Reactivity	Human
Format	Purified
Clonality	Recombinant Rabbit Monoclonal
Isotype	Rabbit IgG, kappa
Clone Name	ACE2/8748R
Purity	Protein A/G affinity
UniProt	Q9BYF1
Localization	Cell membrane, Secreted
Applications	ELISA (Order BSA-free Format For Coating) : Immunohistochemistry (FFPE) : 1-2ug/ml for 30 min at RT
Limitations	This Angiotensin Converting Enzyme 2 antibody is available for research use only.



IHC staining of FFPE human small intestine tissue with Angiotensin Converting Enzyme 2 antibody (clone ACE2/8748R) at 2ug/ml. HIER: boil tissue sections in pH 9 10mM Tris with 1mM EDTA for 20 min and allow to cool before testing.



SDS-PAGE analysis of purified, BSA-free Angiotensin Converting Enzyme 2 antibody (clone ACE2/8748R) as confirmation of integrity and purity.

Description

Carboxypeptidase which converts angiotensin I to angiotensin 1-9, a peptide of unknown function, and angiotensin II to angiotensin 1-7, a vasodilator. Also able to hydrolyze apelin-13 and dynorphin-13 with high efficiency. By cleavage of angiotensin II, may be an important regulator of heart function. By cleavage of angiotensin II, may also have a protective role in acute lung injury. Plays an important role in amino acid transport by acting as binding partner of amino acid transporter SL6A19 in intestine, regulating trafficking, expression on the cell surface, and its catalytic activity. In case of human coronaviruses SARS and HCoV-NL63 infections, serve as functional receptor for the spike glycoprotein of both coronaviruses.

Application Notes

Optimal dilution of the Angiotensin Converting Enzyme 2 antibody should be determined by the researcher.

Immunogen

A recombinant partial protein sequence (within amino acids 705-805) from the human protein was used as the immunogen for the Angiotensin Converting Enzyme 2 antibody.

Storage

Aliquot the Angiotensin Converting Enzyme 2 antibody and store frozen at -20°C or colder. Avoid repeated freeze-thaw cycles.