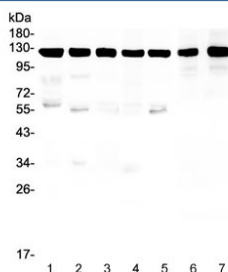


## Amyloid beta Antibody / APP (R31517)

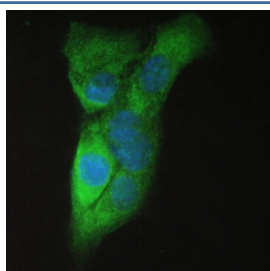
Catalog No.	Formulation	Size
R31517	0.5mg/ml if reconstituted with 0.2ml sterile DI water	100 ug

**Bulk quote request**

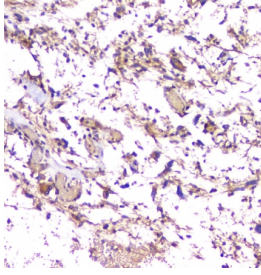
<b>Availability</b>	1-3 business days
<b>Species Reactivity</b>	Human, Mouse, Rat
<b>Format</b>	Antigen affinity purified
<b>Clonality</b>	Polyclonal (rabbit origin)
<b>Isotype</b>	Rabbit IgG
<b>Purity</b>	Antigen affinity
<b>Buffer</b>	Lyophilized from 1X PBS with 2.5% BSA, 0.025% sodium azide
<b>UniProt</b>	P05067
<b>Localization</b>	Cytoplasmic, membrane
<b>Applications</b>	Western Blot : 0.5-1ug/ml IHC (FFPE) : 0.5-1ug/ml IF/ICC (FFPE) : 2-4ug/ml
<b>Limitations</b>	This Amyloid beta antibody is available for research use only.



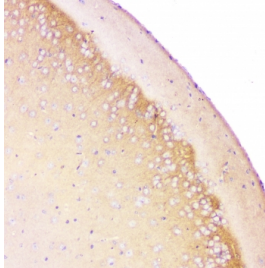
Western blot testing of human 1) HeLa, 2) U-87 MG, 3) T-47D, 4) A549, 5) U-2 OS, 6) rat brain and 7) mouse brain lysate with Amyloid beta antibody. Predicted molecular weight 79~120 kDa depending on glycosylation level.



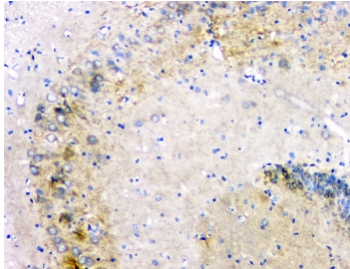
IF/ICC staining of FFPE human A431 cells with Amyloid beta antibody (green) at 2ug/ml and DAPI nuclear stain (blue). HIER: boil tissue sections in pH6, 10mM citrate buffer, for 10-20 min and allow to cool before testing.



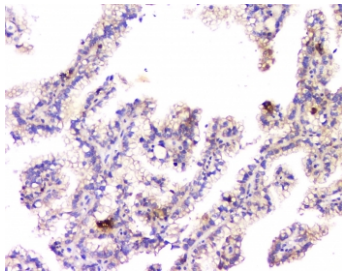
IHC staining of FFPE human glioma tissue with Amyloid beta antibody at 1ug/ml. HIER: boil tissue sections in pH6, 10mM citrate buffer, for 10-20 min and allow to cool before testing.



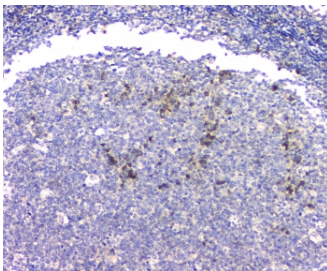
IHC staining of FFPE mouse brain with Amyloid beta antibody at 1ug/ml. HIER: boil tissue sections in pH6, 10mM citrate buffer, for 10-20 min and allow to cool before testing.



IHC staining of FFPE rat brain with Amyloid beta antibody at 1ug/ml. HIER: boil tissue sections in pH6, 10mM citrate buffer, for 10-20 min and allow to cool before testing.



IHC staining of FFPE human renal cancer with Amyloid beta antibody at 1ug/ml. HIER: boil tissue sections in pH6, 10mM citrate buffer, for 10-20 min and allow to cool before testing.



IHC staining of FFPE human tonsil with Amyloid beta antibody at 1ug/ml. HIER: boil tissue sections in pH6, 10mM citrate buffer, for 10-20 min and allow to cool before testing.

## Description

Amyloid beta, also called Abeta and APP, denotes peptides that are crucially involved in Alzheimers disease as the main component of the amyloid plaques found in the brains of Alzheimer patients. Several potential activities have been discovered for Amyloid beta, including activation of kinase enzymes, functioning as a transcription factor, and anti-microbial activity (potentially associated with it pro-inflammatory activity). Moreover, monomeric Amyloid beta is indicated to protect neurons by quenching metal-inducible oxygen radical generation and thereby inhibiting neurotoxicity.

## Application Notes

The stated application concentrations are suggested starting amounts. Titration of the Amyloid beta antibody may be required due to differences in protocols and secondary/substrate sensitivity.

## Immunogen

An amino acid sequence from the C-terminus of human APP (DAEFRHDSGYEVHHQKLVFFAEDVGSNKGAIIGLMVGGVVIA) was used as the immunogen for this Amyloid beta antibody.

## Storage

After reconstitution, the Amyloid beta antibody can be stored for up to one month at 4oC. For long-term, aliquot and store at -20oC. Avoid repeated freezing and thawing.