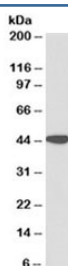


AMACR Antibody (R35622)

Catalog No.	Formulation	Size
R35622-100UG	0.5 mg/ml in 1X TBS, pH7.3, with 0.5% BSA (US sourced) and 0.02% sodium azide	100 ug

[Bulk quote request](#)

Availability	1-3 business days
Species Reactivity	Human
Format	Antigen affinity purified
Clonality	Polyclonal (goat origin)
Isotype	Goat Ig
Purity	Antigen affinity
Gene ID	23600
Applications	Western Blot : 0.1-0.3ug/ml ELISA (peptide) LOD : 1:64000
Limitations	This AMACR antibody is available for research use only.



Western blot testing of human kidney lysate with AMACR antibody at 0.1ug/ml.
Predicted molecular weight ~43kDa.

Description

Additional name(s) for this target protein: Alpha-methylacyl-CoA racemase

Application Notes

Optimal dilution of the AMACR antibody should be determined by the researcher.

1. This AMACR antibody will detect isoforms 1/3.

Immunogen

Amino acids RGSFITSEEQDVSPR were used as the immunogen for this AMACR antibody.

Storage

Aliquot and store the AMACR antibody at -20oC.