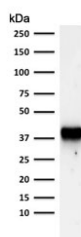


AMACR Antibody (Prostate Cancer Marker) [clone AMACR/1723] (V3237)

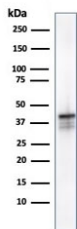
Catalog No.	Formulation	Size
V3237-100UG	0.2 mg/ml in 1X PBS with 0.1 mg/ml BSA (US sourced) and 0.05% sodium azide	100 ug
V3237-20UG	0.2 mg/ml in 1X PBS with 0.1 mg/ml BSA (US sourced) and 0.05% sodium azide	20 ug
V3237SAF-100UG	1 mg/ml in 1X PBS; BSA free, sodium azide free	100 ug

[Bulk quote request](#)

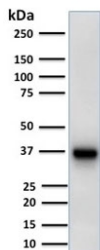
Availability	1-3 business days
Species Reactivity	Human
Format	Purified
Clonality	Monoclonal (mouse origin)
Isotype	Mouse IgG2b, lambda
Clone Name	AMACR/1723
Purity	Protein G affinity chromatography
UniProt	Q9UHK6
Localization	Cytoplasmic
Applications	Western Blot : 0.5-2ug/ml Immunohistochemistry (FFPE) : 1-2ug/ml for 30 min at RT
Limitations	This AMACR antibody is available for research use only.



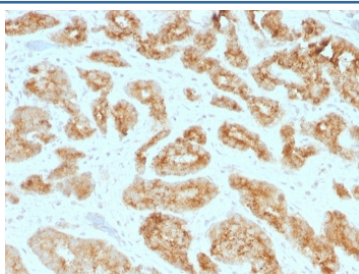
Western blot testing of human PC3 cell lysate with AMACR antibody. Predicted molecular weight ~43 kDa.



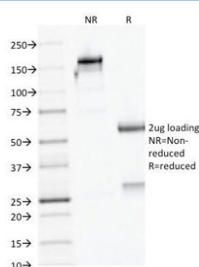
Western blot testing of human kidney lysate with AMACR antibody. Predicted molecular weight ~43 kDa.



Western blot testing of human liver lysate with AMACR antibody. Predicted molecular weight ~43 kDa.



IHC testing of FFPE human prostate carcinoma with AMACR antibody. HIER: boil tissue sections in pH 9 10mM Tris with 1mM EDTA for 20 min and allow to cool before testing.



SDS-PAGE analysis of purified, BSA-free AMACR antibody as confirmation of integrity and purity.

Description

AMACR, also known as p504S is an enzyme that is involved in bile acid biosynthesis and beta-oxidation of branched-chain fatty acids. It is expressed in cells of premalignant high-grade prostatic intraepithelial neoplasia (HGPIN) and prostate adenocarcinoma. The majority of the carcinoma cells show a distinct granular cytoplasmic staining reaction. AMACR is present at low or undetectable levels in glandular epithelial cells of normal prostate and benign prostatic hyperplasia. A spotty granular cytoplasmic staining is seen in a few cells of the benign glands.

Application Notes

Optimal dilution of the AMACR antibody should be determined by the researcher.

Immunogen

A recombinant human protein was used as the immunogen for the AMACR antibody.

Storage

Store the AMACR antibody at 2-8°C (with azide) or aliquot and store at -20°C or colder (without azide).

