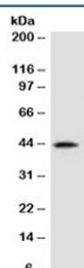


AMACR Antibody [clone 2MACR-1] (V3990)

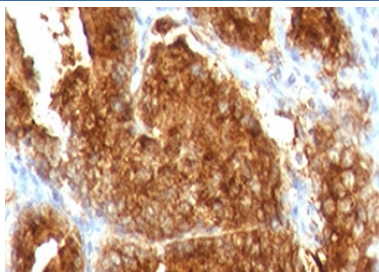
Catalog No.	Formulation	Size
V3990-100UG	0.2 mg/ml in 1X PBS with 0.1 mg/ml BSA (US sourced) and 0.05% sodium azide	100 ug
V3990-20UG	0.2 mg/ml in 1X PBS with 0.1 mg/ml BSA (US sourced) and 0.05% sodium azide	20 ug
V3990SAF-100UG	1 mg/ml in 1X PBS; BSA free, sodium azide free	100 ug
V3990IHC-7ML	Prediluted in 1X PBS with 0.1 mg/ml BSA (US sourced) and 0.05% sodium azide; *For IHC use only*	7 ml

[Bulk quote request](#)

Availability	1-3 business days
Species Reactivity	Human
Format	Purified
Clonality	Monoclonal (mouse origin)
Isotype	Mouse IgG1, kappa
Clone Name	2MACR-1
Purity	Protein G affinity chromatography
UniProt	Q9UHK6
Localization	Cytoplasmic
Applications	Western Blot : 0.5-1ug/ml IHC (FFPE) : 1-2ug/ml for 30 min at RT Prediluted IHC Only Format : incubate for 30 min at RT (1)
Limitations	This AMACR antibody is available for research use only.



Western blot testing of human kidney lysate with AMACR antibody (clone 2MACR-1).
Predicted molecular weight ~43 kDa.



IHC testing of FFPE human prostate carcinoma with AMACR antibody (clone 2MACR-1). Required HIER: steam section in pH6 citrate buffer for 20 min and allow to cool prior to staining.

Description

The AMACR gene encodes the racemase Alpha-methylacyl-CoA. The encoded enzyme interconverts pristanoyl-CoA and C27-bile acylCoAs between their (R)- and (S)-stereoisomers. The conversion to the (S)-stereoisomers is necessary for degradation of these substrates by peroxisomal beta-oxidation. Encoded proteins from this locus localize to both mitochondria and peroxisomes. Mutations in this gene may be associated with adult-onset sensorimotor neuropathy, pigmentary retinopathy, and adrenomyeloneuropathy due to defects in bile acid synthesis. Alternatively spliced transcript variants have been described. Read-through transcription also exists between this gene and the upstream neighboring C1QTNF3 (C1q and tumor necrosis factor related protein 3) gene. [RefSeq]

Application Notes

Optimal dilution of the AMACR antibody should be determined by the researcher.

1. The prediluted format is supplied in a dropper bottle and is optimized for use in IHC. After epitope retrieval step (if required), drip mAb solution onto the tissue section and incubate at RT for 30 min.

Immunogen

A portion of amino acids 297-394 was used as the immunogen for the AMACR antibody.

Storage

Store the AMACR antibody at 2-8°C (with azide) or aliquot and store at -20°C or colder (without azide).