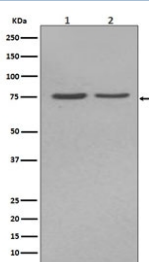


ALPL Antibody / Alkaline Phosphatase [clone DBF-1] (RQ5119)

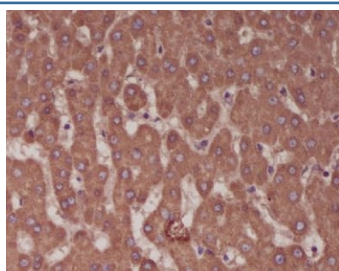
Catalog No.	Formulation	Size
RQ5119	Antibody in PBS with 0.02% sodium azide, 50% glycerol and 0.4-0.5mg/ml BSA	100 ul

[Bulk quote request](#)

Availability	1-2 weeks
Species Reactivity	Human
Format	Purified
Clonality	Rabbit Monoclonal
Isotype	Rabbit IgG
Clone Name	DBF-1
Purity	Affinity purified
UniProt	P05186
Applications	Western Blot : 1:5000-1:10000 Immunohistochemistry (FFPE) : 1:50-1:200
Limitations	This ALPL antibody is available for research use only.



Western blot testing of human 1) HepG2 and 2) JAr cell lysate with ALPL antibody. Predicted molecular weight ~57 kDa, but can be observed at up to ~75 kDa due to glycosylation.



IHC staining of FFPE human liver tissue with ALPL antibody. HIER: boil tissue sections in pH6, 10mM citrate buffer, for 10-20 min and allow to cool before testing.

Description

This gene encodes a member of the alkaline phosphatase family of proteins. There are at least four distinct but related alkaline phosphatases: intestinal, placental, placental-like, and liver/bone/kidney (tissue non-specific). The first three are located together on chromosome 2, while the tissue non-specific form is located on chromosome 1. The product of this gene is a membrane bound glycosylated enzyme that is not expressed in any particular tissue and is, therefore, referred to as the tissue-nonspecific form of the enzyme. [RefSeq]

Application Notes

Optimal dilution of the ALPL antibody should be determined by the researcher.

Immunogen

A synthetic peptide specific to human Alkaline Phosphatase / ALPL was used as the immunogen for the ALPL antibody.

Storage

Store the ALPL antibody at -20oC.