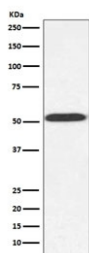


## Alpha Tubulin Antibody / TUB1 [clone CI-20] (RQ5287)

Catalog No.	Formulation	Size
RQ5287	Antibody in PBS with 0.02% sodium azide, 50% glycerol and 0.4-0.5mg/ml BSA	100 ul

[Bulk quote request](#)

Availability	1-2 weeks
Species Reactivity	Saccharomyces cerevisiae
Format	Purified
Clonality	Rabbit Monoclonal
Isotype	Rabbit IgG
Clone Name	CI-20
Purity	Affinity purified
UniProt	P09733
Applications	Western Blot : 1:3000-1:10000
Limitations	This Alpha Tubulin antibody is available for research use only.



Western blot testing of *Saccharomyces cerevisiae* lysate with Alpha Tubulin antibody.  
Predicted molecular weight ~50 kDa.

### Description

Tubulin is the major constituent of microtubules. It binds two moles of GTP, one at an exchangeable site on the beta chain and one at a non-exchangeable site on the alpha chain. [UniProt]

### Application Notes

Optimal dilution of the Alpha Tubulin antibody should be determined by the researcher.

### Immunogen

A synthetic peptide specific to *Saccharomyces cerevisiae* Alpha Tubulin / TUB1 was used as the immunogen for the

Alpha Tubulin antibody.

## **Storage**

Store the Alpha Tubulin antibody at -20oC.