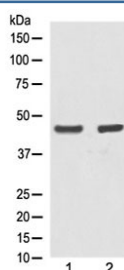


## Alpha Actin Antibody / ACATA1 [clone C-1] (RQ4494)

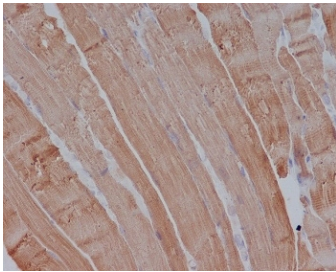
| Catalog No. | Formulation  | Size   |
|-------------|--|--------|
| RQ4494      | Antibody in PBS with 0.02% sodium azide, 50% glycerol and 0.4-0.5mg/ml BSA | 100 ul |

[Bulk quote request](#)

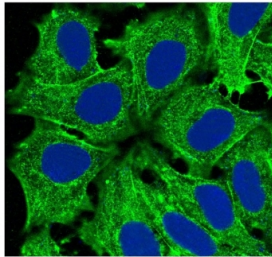
|                    |  |
|--------------------|--|
| Availability       | 1-2 weeks  |
| Species Reactivity | Human, Mouse   |
| Format             | Purified   |
| Clonality          | Rabbit Monoclonal  |
| Isotype            | Rabbit IgG   |
| Clone Name         | C-1  |
| Purity             | Protein A affinity   |
| UniProt            | P68133   |
| Localization       | Cytoplasm, cytoskeleton  |
| Applications       | Western Blot : 1:500-1:2000<br>Immunohistochemistry (FFPE) : 1:50-1:200<br>Immunofluorescence : 1:50-1:200 |
| Limitations        | This Alpha Actin antibody is available for research use only.  |



Western blot testing of human 1) A431 and 2) MCF7 lysate with Alpha Actin antibody at 0.5ug/ml. Expected molecular weight: 42-45 kDa.



IHC testing of FFPE mouse muscle with Alpha Actin antibody at 2ug/ml. HIER: boil tissue sections in pH6, 10mM citrate buffer, for 10-20 min followed by cooling at RT for 20 min.



Immunofluorescent staining of human HeLa cells with Alpha Actin antibody (green) and DAPI nuclear stain (blue).

## Description

Actins are highly conserved proteins that are involved in various types of cell motility and are ubiquitously expressed in all eukaryotic cells.

## Application Notes

Optimal dilution of the Alpha Actin antibody should be determined by the researcher.

## Immunogen

A synthetic peptide from human Alpha Actin was used as the immunogen for the Alpha Actin antibody.

## Storage

Store the Alpha Actin antibody at -20oC.