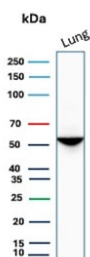


Alpha 1 Antitrypsin Antibody (Hepatocyte Marker) [clone AAT/1379] (V3222)

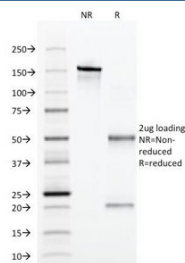
Catalog No.	Formulation	Size
V3222-100UG	0.2 mg/ml in 1X PBS with 0.1 mg/ml BSA (US sourced) and 0.05% sodium azide	100 ug
V3222-20UG	0.2 mg/ml in 1X PBS with 0.1 mg/ml BSA (US sourced) and 0.05% sodium azide	20 ug
V3222SAF-100UG	1 mg/ml in 1X PBS; BSA free, sodium azide free	100 ug

Bulk quote request

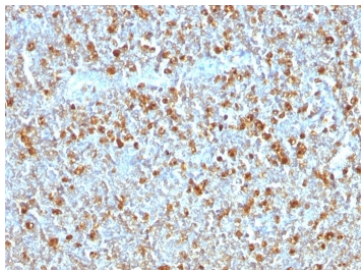
Availability	1-3 business days
Species Reactivity	Human
Format	Purified
Clonality	Monoclonal (mouse origin)
Isotype	Mouse IgG1, kappa
Clone Name	AAT/1379
Purity	Protein G affinity
UniProt	P01009
Localization	Cytoplasmic
Applications	Western Blot : 2-4ug/ml Immunohistochemistry (FFPE) : 1-2ug/ml for 30 min at RT
Limitations	This Alpha 1 Antitrypsin antibody is available for research use only.



Western blot testing of human lung tissue lysate with Alpha 1 Antitrypsin antibody.
Expected molecular weight: 47-52 kDa depending on the level of glycosylation.



SDS-PAGE Analysis of Purified, BSA-Free Alpha 1 Antitrypsin Antibody (clone AAT/1379). Confirmation of Integrity and Purity of the Antibody.



IHC testing of FFPE human tonsil with Alpha 1 Antitrypsin antibody (clone AAT/1379). Required HIER: steam sections in pH6, 10mM citrate buffer for 10-20 min.

Description

Application Notes

Titration of the Alpha 1 Antitrypsin antibody may be required due to differences in protocols and secondary/substrate sensitivity.

Immunogen

A human partial recombinant protein was used as the immunogen for this Alpha 1 Antitrypsin antibody.

Storage

Store the Alpha 1 Antitrypsin antibody at 2-8°C (with azide) or aliquot and store at -20°C or colder (without azide).