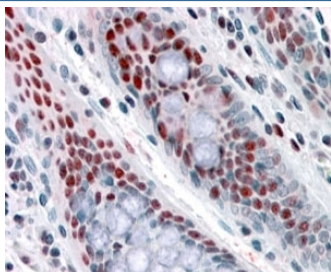


ALP Antibody / NAT10 (R34641)

Catalog No.	Formulation	Size
R34641-100UG	0.5 mg/ml in 1X TBS, pH7.3, with 0.5% BSA (US sourced) and 0.02% sodium azide	100 ug

Bulk quote request

Availability	1-3 business days
Species Reactivity	Human
Predicted Reactivity	Mouse, Rat, Dog
Format	Antigen affinity purified
Clonality	Polyclonal (goat origin)
Isotype	Goat Ig
Purity	Antigen affinity
Gene ID	55226
Localization	Nuclear
Applications	Immunohistochemistry (FFPE) : 3-6ug/ml ELISA (peptide) LOD : 1:64000
Limitations	This ALP antibody is available for research use only.



IHC testing of FFPE human colon with ALP antibody at 4ug/ml. HIER: steamed with pH6 citrate buffer, AP-staining.

Description

Additional name(s) for this target protein: Acetyltransferase-like protein, N-acetyltransferase 10; NAT10

Application Notes

Optimal dilution of the ALP antibody should be determined by the researcher.

Immunogen

Amino acids KSDKKRRKLEAKQ were used as the immunogen for this ALP antibody.

Storage

Aliquot and store the ALP antibody at -20oC.