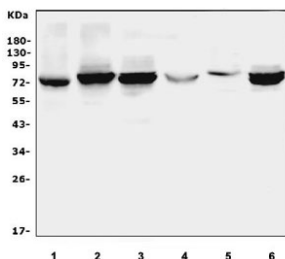


ALOX15 Antibody (R31501)

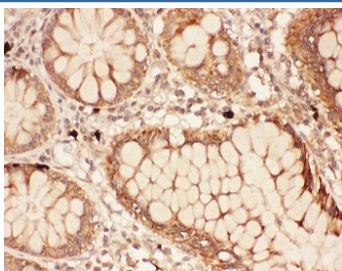
Catalog No.	Formulation	Size
R31501	0.5mg/ml if reconstituted with 0.2ml sterile DI water	100 ug

Bulk quote request

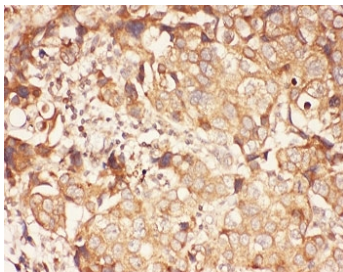
Availability	1-3 business days
Species Reactivity	Human, Mouse, Rat
Format	Antigen affinity purified
Clonality	Polyclonal (rabbit origin)
Isotype	Rabbit IgG
Purity	Antigen affinity
Buffer	Lyophilized from 1X PBS with 2.5% BSA and 0.025% sodium azide
Gene ID	246
Applications	Western Blot : 0.5-1ug/ml Immunohistochemistry (FFPE) : 0.5-1ug/ml
Limitations	This ALOX15 antibody is available for research use only.



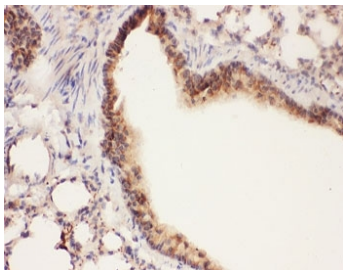
Western blot testing of 1) rat lung, 2) rat thymus, 3) rat spleen, 4) mouse lung, 5) mouse testis and 6) mouse thymus tissue lysate with ALOX15 antibody. Predicted molecular weight ~75 kDa.



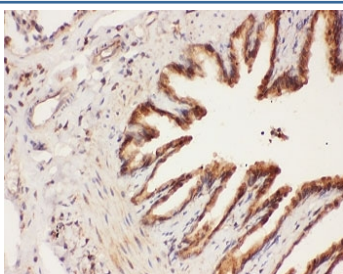
IHC-P: ALOX15 antibody testing of human intestine cancer tissue



IHC-P: ALOX15 antibody testing of human breast cancer tissue



IHC-P: ALOX15 antibody testing of mouse lung tissue



IHC-P: ALOX15 antibody testing of rat lung tissue

Description

Arachidonate 15-lipoxygenase, also known as 15 LOX or LOG15, is an enzyme that in humans is encoded by the ALOX15 gene. This gene is mapped to 17p13.2. It is found that ALOX15 is a mutator gene. ALOX15 gene product is implicated in antiinflammation, membrane remodeling, and cancer development/metastasis. Loss of the TP53 gene, or gain-of-function activities resulting from the expression of its mutant forms regulates ALOX15 promoter activity in human and in mouse, albeit in directionally opposite manners.

Application Notes

The stated application concentrations are suggested starting amounts. Titration of the ALOX15 antibody may be required due to differences in protocols and secondary/substrate sensitivity.

Immunogen

Human partial recombinant protein (AA 2-337) was used as the immunogen for this ALOX15 antibody.

Storage

After reconstitution, the ALOX15 antibody can be stored for up to one month at 4°C. For long-term, aliquot and store at -20°C. Avoid repeated freezing and thawing.

