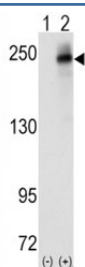


## ALK Antibody (F50550)

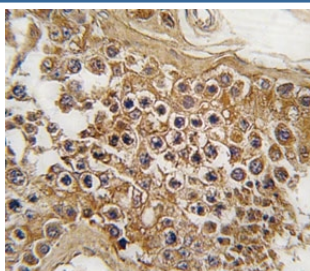
Catalog No.	Formulation	Size
F50550-0.4ML	In 1X PBS, pH 7.4, with 0.09% sodium azide	0.4 ml
F50550-0.08ML	In 1X PBS, pH 7.4, with 0.09% sodium azide	0.08 ml

**Bulk quote request**

<b>Availability</b>	1-3 business days
<b>Species Reactivity</b>	Human
<b>Format</b>	Purified
<b>Clonality</b>	Polyclonal (rabbit origin)
<b>Isotype</b>	Rabbit Ig
<b>Purity</b>	Purified
<b>UniProt</b>	Q9UM73
<b>Applications</b>	Western Blot : 1:1000 IHC (Paraffin) : 1:10-1:50
<b>Limitations</b>	This ALK antibody is available for research use only.



Western blot analysis of ALK antibody and 293 cell lysate (2 ug/lane) either nontransfected (Lane 1) or transiently transfected with the human gene (2). Predicted molecular weight: 190-220 kDa.



IHC analysis of FFPE human testis tissue stained with ALK antibody

## Description

Anaplastic lymphoma kinase, a member of the insulin receptor subfamily of Tyr protein kinases, is an orphan receptor. It appears to play an important role in the normal development and function of the nervous system. This Type I membrane protein is expressed in brain and CNS and in the small intestine and testis, but not in normal lymphoid cells. A form of non-Hodgkin's lymphoma is characterized by a chromosomal translocation t(2;5)(p23;q35) that involves NPM1 and ALK. The protein contains 1 LDL-receptor class A domain and 2 putative MAM domains.

## Application Notes

Titration of the ALK antibody may be required due to differences in protocols and secondary/substrate sensitivity.

## Immunogen

A portion of amino acids 636-666 from the human protein was used as the immunogen for this ALK antibody.

## Storage

Aliquot the ALK antibody and store frozen at -20oC or colder. Avoid repeated freeze-thaw cycles.