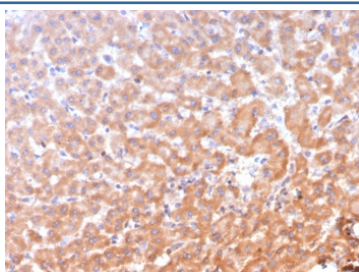


ALDH1L1 Antibody [clone ALDH1L1/7958] (V4988)

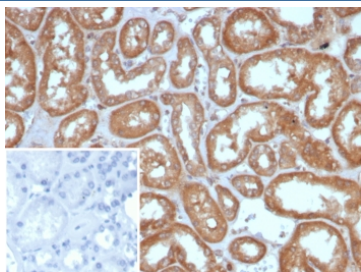
Catalog No.	Formulation	Size
V4988-100UG	0.2 mg/ml in 1X PBS with 0.1 mg/ml BSA (US sourced), 0.05% sodium azide	100 ug
V4988-20UG	0.2 mg/ml in 1X PBS with 0.1 mg/ml BSA (US sourced), 0.05% sodium azide	20 ug
V4988SAF-100UG	1 mg/ml in 1X PBS; BSA free, sodium azide free	100 ug

[Bulk quote request](#)

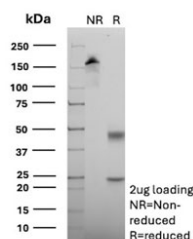
Availability	1-3 business days
Species Reactivity	Human
Format	Purified
Clonality	Monoclonal (mouse origin)
Isotype	Mouse IgG1, kappa
Clone Name	ALDH1L1/7958
Purity	Protein A/G affinity
UniProt	O75891
Localization	Cytoplasm
Applications	Immunohistochemistry (FFPE) : 1-2ug/ml for 30 min at RT
Limitations	This ALDH1L1 antibody is available for research use only.



IHC staining of FFPE human hepatocellular carcinoma tissue with ADH1L1 antibody (clone ALDH1L1/7958). HIER: boil tissue sections in pH 9 10mM Tris with 1mM EDTA for 20 min and allow to cool before testing.



IHC staining of FFPE human kidney tissue with ADH1L1 antibody (clone ALDH1L1/7958). Inset: PBS used in place of primary Ab (secondary Ab negative control). HIER: boil tissue sections in pH 9 10mM Tris with 1mM EDTA for 20 min and allow to cool before testing.



SDS-PAGE analysis of purified, BSA-free ALDH1L1 antibody (clone ALDH1L1/7958) as confirmation of integrity and purity.

Description

Aldehyde dehydrogenases (ALDHs) mediate NADP⁺-dependent oxidation of aldehydes into acids during detoxification of alcohol-derived acetaldehyde, lipid peroxidation and metabolism of corticosteroids, biogenic amines and neurotransmitters. ALDH1L1 (aldehyde dehydrogenase 1 family member L1), also known as FTHFD or 10-FTHFD (10-formyltetrahydrofolate dehydrogenase), is a cytosolic protein that is developmentally regulated in the cerebellum. ALDH1L1 binds to folate and catalyzes the conversion of 10-formyltetrahydrofolate (10-FTHF) to tetrahydrofolate (THF). This suggests a possible role for ALDH1L1 in the regulation of cellular THF levels as well as in the inhibition of cell proliferation (as 10-FTHF is essential for the synthesis of purine). In addition, the overexpression of ALDH1L1 can restrict cell proliferation in vitro.

Application Notes

Optimal dilution of the ALDH1L1 antibody should be determined by the researcher.

Immunogen

A recombinant fragment of human ALDH1L1 protein was used as the immunogen for the ALDH1L1 antibody.

Storage

Aliquot the ALDH1L1 antibody and store frozen at -20°C or colder. Avoid repeated freeze-thaw cycles.