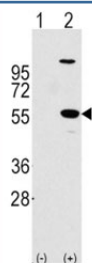


ALDH1A1 Antibody (F44049)

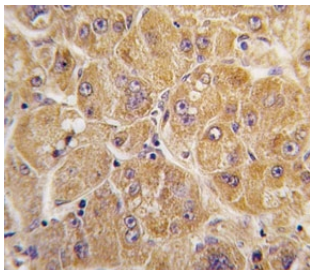
Catalog No.	Formulation	Size
F44049-0.4ML	In 1X PBS, pH 7.4, with 0.09% sodium azide	0.4 ml
F44049-0.08ML	In 1X PBS, pH 7.4, with 0.09% sodium azide	0.08 ml

[Bulk quote request](#)

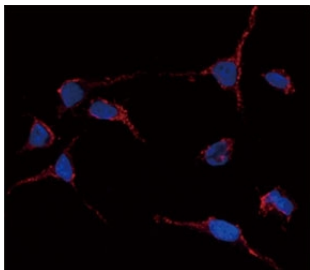
Availability	1-3 business days
Species Reactivity	Human
Predicted Reactivity	Mouse, Primate
Format	Purified
Clonality	Polyclonal (rabbit origin)
Isotype	Rabbit Ig
Purity	Purified
UniProt	P00352
Applications	Western Blot : 1:1000 IHC (Paraffin) : 1:10-1:50 Immunofluorescence : 1:10-1:50 Flow Cytometry : 1:10-1:50
Limitations	This ALDH1A1 antibody is available for research use only.



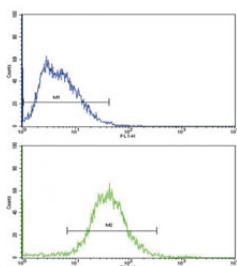
Western blot analysis of ALDH1A1 antibody and 293 cell lysate (2 ug/lane) either nontransfected (Lane 1) or transiently transfected with the ALDH1A1 gene (2).



IHC analysis of FFPE human hepatocarcinoma tissue stained with ALDH1A1 antibody



Immunofluorescence analysis of anti-ALDH1A1 antibody and HeLa cells. Primary Ab was followed by Alexa-Fluor-546-conjugated donkey anti-rabbit IgG (H+L). Alexa-Fluor-546 emits orange fluorescence. Blue counterstaining is DAPI.



Flow cytometric analysis of HepG2 cells using ALDH1A1 antibody (green) compared to a [negative control](http://www.ncbi.nlm.nih.gov/pmc/articles/PMC1001001/) (blue). FITC-conjugated goat-anti-rabbit secondary Ab was used for the analysis.

Description

ALDH1A1 binds free retinal and cellular retinol-binding protein- bound retinal. Can convert/oxidize retinaldehyde to retinoic acid (By similarity). [UniProt]

Application Notes

Titration of the ALDH1A1 antibody may be required due to differences in protocols and secondary/substrate sensitivity.

Immunogen

A portion of amino acids 302-331 from the human protein was used as the immunogen for this ALDH1A1 antibody.

Storage

Aliquot the ALDH1A1 antibody and store frozen at -20oC or colder. Avoid repeated freeze-thaw cycles.