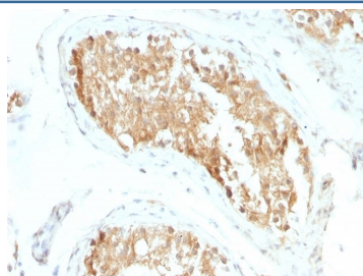


ALDH1A1 Antibody / Acetaldehyde dehydrogenase 1 [clone ALDH1A1/1381] (V7764)

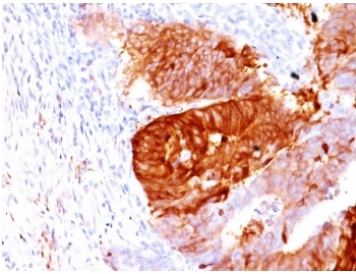
Catalog No.	Formulation	Size
V7764-100UG	0.2 mg/ml in 1X PBS with 0.1 mg/ml BSA (US sourced) and 0.05% sodium azide	100 ug
V7764-20UG	0.2 mg/ml in 1X PBS with 0.1 mg/ml BSA (US sourced) and 0.05% sodium azide	20 ug
V7764SAF-100UG	1 mg/ml in 1X PBS; BSA free, sodium azide free	100 ug

Bulk quote request

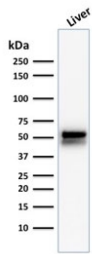
Availability	1-3 business days
Species Reactivity	Human
Format	Purified
Clonality	Monoclonal (mouse origin)
Isotype	Mouse IgG1, kappa
Clone Name	ALDH1A1/1381
Purity	Protein G affinity chromatography
UniProt	P00352
Localization	Cytoplasmic
Applications	Western Blot : 2-4ug/ml Immunohistochemistry (FFPE) : 1-2ug/ml
Limitations	This ALDH1A1 antibody is available for research use only.



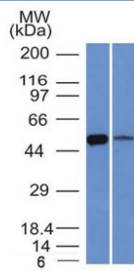
IHC staining of FFPE human testicular carcinoma with ALDH1A1 antibody (clone ALDH1A1/1381). HIER: boil tissue sections in pH 9 10mM Tris with 1mM EDTA for 10-20 min and allow to cool before testing.



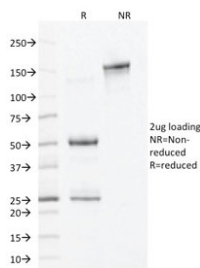
IHC staining of FFPE human colon carcinoma with ALDH1A1 antibody (clone ALDH1A1/1381). HI ER: boil tissue sections in pH 9 10mM Tris with 1mM EDTA for 10-20 min and allow to cool before testing.



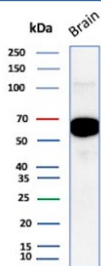
Western blot testing of human liver lysate with ALDH1A1 antibody (clone ALDH1A1/1381). Expected molecular weight ~55 kDa.



Western blot testing of human K562 (left) and lung (right) lysate with ALDH1A1 antibody (clone ALDH1A1/1381). Expected molecular weight ~55 kDa.



SDS-PAGE analysis of purified, BSA-free ALDH1A1 antibody (clone ALDH1A1/1381) as confirmation of integrity and purity.



Western blot testing of human brain tissue lysate with ALDH1A1 antibody (clone ALDH1A1/1381). Expected molecular weight ~55 kDa.

Description

ALDH1A1 belongs to the ALDH enzymes, a family of evolutionarily conserved enzymes comprised of 19 isoforms that are localized in the cytoplasm, mitochondria or nucleus. ALDH1A1 is predominantly expressed in the epithelium of testis, brain, eye, liver, kidney, as well as neural and hematopoietic stem cells. Reportedly, high ALDH1A1 expression is found in solitary fibrous tumor (SFT) and hemangiopericytoma (HPC), compared to meningiomas and synovial sarcomas. In combination with CD34, ALDH1A1 may be useful for the differentiation among SFT, HPC, meningioma, and synovial sarcoma.

Application Notes

Optimal dilution of the ALDH1A1 antibody should be determined by the researcher.

Immunogen

A human recombinant partial ALDH1A1 protein (AA 315-434) was used as the immunogen for this ALDH1 antibody.

Storage

Store the ALDH1A1 antibody at 2-8oC (with azide) or aliquot and store at -20oC or colder (without azide).