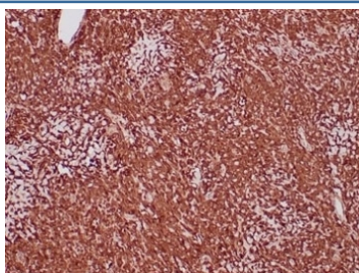


## Aldehyde Dehydrogenase 1A1 Antibody / ALDH1A1 [clone ALDH1A1/4793] (V9639)

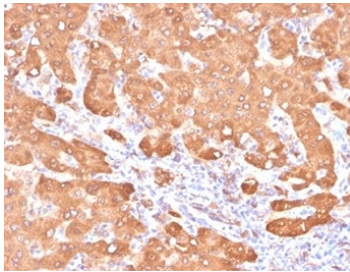
Catalog No.	Formulation	Size
V9639-100UG	0.2 mg/ml in 1X PBS with 0.1 mg/ml BSA (US sourced), 0.05% sodium azide	100 ug
V9639-20UG	0.2 mg/ml in 1X PBS with 0.1 mg/ml BSA (US sourced), 0.05% sodium azide	20 ug
V9639SAF-100UG	1 mg/ml in 1X PBS; BSA free, sodium azide free	100 ug

### Bulk quote request

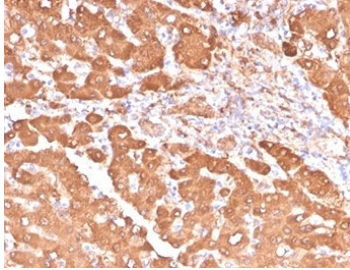
<b>Availability</b>	1-3 business days
<b>Species Reactivity</b>	Human
<b>Format</b>	Purified
<b>Clonality</b>	Monoclonal (mouse origin)
<b>Isotype</b>	Mouse IgG1, kappa
<b>Clone Name</b>	ALDH1A1/4793
<b>Purity</b>	Protein A/G affinity
<b>UniProt</b>	P00352
<b>Localization</b>	Cytoplasm
<b>Applications</b>	Western Blot : 1-2ug/ml Immunohistochemistry (FFPE) : 1-2ug/ml
<b>Limitations</b>	This Aldehyde Dehydrogenase 1A1 antibody is available for research use only.



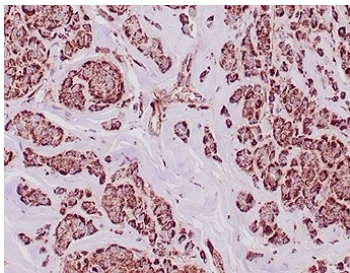
IHC staining of FFPE human sarcoma tissue with Aldehyde Dehydrogenase 1A1 antibody (clone ALDH1A1/4793) at 2ug/ml. HIER: boil tissue sections in pH 9 10mM Tris with 1mM EDTA for 20 min and allow to cool before testing.



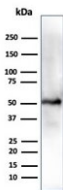
IHC staining of FFPE human colon carcinoma tissue with Aldehyde Dehydrogenase 1A1 antibody (clone ALDH1A1/4793). HIER: boil tissue sections in pH 9 10mM Tris with 1mM EDTA for 20 min and allow to cool before testing.



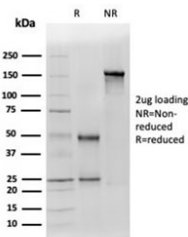
IHC staining of FFPE human colon carcinoma tissue with Aldehyde Dehydrogenase 1A1 antibody (clone ALDH1A1/4793). HIER: boil tissue sections in pH 9 10mM Tris with 1mM EDTA for 20 min and allow to cool before testing.



IHC staining of FFPE human breast carcinoma tissue with Aldehyde Dehydrogenase 1A1 antibody (clone ALDH1A1/4793) at 2ug/ml. HIER: boil tissue sections in pH 9 10mM Tris with 1mM EDTA for 20 min and allow to cool before testing.

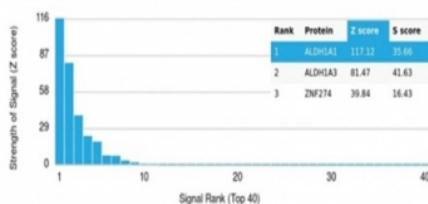


Western blot testing of human HepG2 cell lysate using Aldehyde Dehydrogenase 1A1 antibody (clone ALDH1A1/4793). Expected molecular weight ~55 kDa.

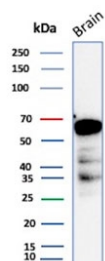


SDS-PAGE analysis of purified, BSA-free Aldehyde Dehydrogenase 1A1 antibody (clone ALDH1A1/4793) as confirmation of integrity and purity.

#### Human Protein Microarray Specificity Validation



Analysis of HuProt(TM) microarray containing more than 19,000 full-length human proteins using Aldehyde Dehydrogenase 1A1 antibody (clone ALDH1A1/4793). These results demonstrate the foremost specificity of the ALDH1A1/4793 mAb. Z- and S- score: The Z-score represents the strength of a signal that an antibody (in combination with a fluorescently-tagged anti-IgG secondary Ab) produces when binding to a particular protein on the HuProt(TM) array. Z-scores are described in units of standard deviations (SD&#39;s) above the mean value of all signals generated on that array. If the targets on the HuProt(TM) are arranged in descending order of the Z-score, the S-score is the difference (also in units of SD&#39;s) between the Z-scores. The S-score therefore represents the relative target specificity of an Ab to its intended target.



Western blot testing of human brain tissue lysate using Aldehyde Dehydrogenase 1A1 antibody (clone ALDH1A1/4793). Expected molecular weight ~55 kDa.

## Description

ALDH1A1 belongs to the ALDH enzymes, a family of evolutionarily conserved enzymes comprised of 19 isoforms that are localized in the cytoplasm, mitochondria or nucleus. ALDH1A1 is predominantly expressed in the epithelium of testis, brain, eye, liver, kidney, as well as neural and hematopoietic stem cells. Reportedly, high ALDH1A1 expression is found in solitary fibrous tumor (SFT) and hemangiopericytoma (HPC), compared to meningiomas and synovial sarcomas. In combination with CD34, ALDH1A1 may be useful for the differentiation among SFT, HPC, meningioma, and synovial sarcoma.

## Application Notes

Optimal dilution of the Aldehyde Dehydrogenase 1A1 antibody should be determined by the researcher.

## Immunogen

Recombinant full-length human ALDH1A1 protein was used as the immunogen for the Aldehyde Dehydrogenase 1A1 antibody.

## Storage

Aliquot the Aldehyde Dehydrogenase 1A1 antibody and store frozen at -20°C or colder. Avoid repeated freeze-thaw cycles.