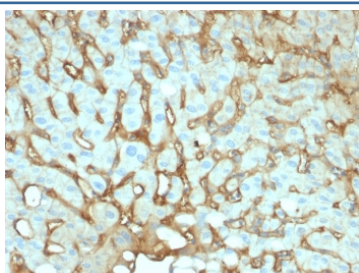


Albumin Antibody / Serum Albumin [clone ALB/2141] (V7553)

| Catalog No. | Formulation | Size |
|----------------|--|--------|
| V7553-100UG | 0.2 mg/ml in 1X PBS with 0.05% sodium azide | 100 ug |
| V7553-20UG | 0.2 mg/ml in 1X PBS with 0.05% sodium azide | 20 ug |
| V7553SAF-100UG | 1 mg/ml in 1X PBS; sodium azide free | 100 ug |
| V7553IHC-7ML | Prediluted in 1X PBS with 0.05% sodium azide; *For IHC use only* | 7 ml |

Bulk quote request

| | |
|--------------------|--|
| Availability | 1-3 business days |
| Species Reactivity | Human |
| Format | Purified |
| Clonality | Monoclonal (mouse origin) |
| Isotype | Mouse IgG1, kappa |
| Clone Name | ALB/2141 |
| Purity | Protein G affinity chromatography |
| UniProt | P02768 |
| Localization | Cell surface, Cytoplasmic |
| Applications | ELISA (order BSA/sodium Azide-free Format For Coating) : Western Blot : 1-2ug/ml Immunohistochemistry (FFPE) : 1-2ug/ml for 30 min at RT |
| Limitations | This human Albumin antibody is available for research use only. |

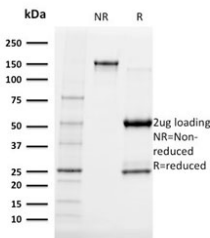


IHC testing of FFPE human hepatocellular carcinoma with human Albumin antibody (clone ALB/2141). Required HIER: boil tissue sections in 10mM citrate buffer, pH6, for 10-20 min followed by cooling at RT for 20 min.

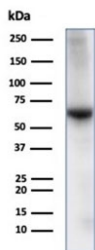
Human Protein Microarray Specificity Validation



Analysis of HuProt(TM) microarray containing more than 19,000 full-length human proteins using human Albumin antibody (clone ALB/2141). These results demonstrate the foremost specificity of the ALB/2141 mAb. Z- and S- score: The Z-score represents the strength of a signal that an antibody (in combination with a fluorescently-tagged anti-IgG secondary Ab) produces when binding to a particular protein on the HuProt(TM) array. Z-scores are described in units of standard deviations (SDs) above the mean value of all signals generated on that array. If the targets on the HuProt(TM) are arranged in descending order of the Z-score, the S-score is the difference (also in units of SDs) between the Z-scores. The S-score therefore represents the relative target specificity of an Ab to its intended target.



SDS-PAGE analysis of purified, BSA-free Albumin antibody (clone ALB/2141) as confirmation of integrity and purity.



Western blot testing of human liver tissue lysate with Albumin antibody. Predicted molecular weight ~69 kDa.

Description

Albumin is a soluble, monomeric protein, which comprises about one half of the blood serum protein. Albumin functions primarily as a carrier protein for steroids, fatty acids, and thyroid hormones and plays a role in stabilizing extracellular fluid volume. Albumin is synthesized in the liver as preproalbumin, which has an N-terminal peptide that is removed before the nascent protein is released from the rough endoplasmic reticulum. The product, proalbumin, is in turn cleaved in the Golgi vesicles to produce the secreted form of albumin.

Application Notes

The optimal dilution of the human Albumin antibody for each application should be determined by the researcher.

1. The prediluted format is supplied in a dropper bottle and is optimized for use in IHC. After epitope retrieval step (if required), drip mAb solution onto the tissue section and incubate at RT for 30 min.

Immunogen

Full length recombinant human protein was used as the immunogen for this human Albumin antibody.

Storage

Store the human Albumin antibody at 2-8°C (with azide) or aliquot and store at -20°C or colder (without azide).

