

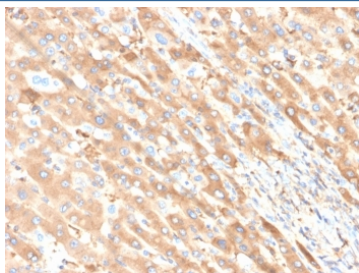
ALB Antibody / Albumin [clone ALB/6411R] (V9185)

| Catalog No. | Formulation | Size |
|----------------|---|--------|
| V9185-100UG | 0.2 mg/ml in 1X PBS with 0.1 mg/ml BSA (US sourced), 0.05% sodium azide | 100 ug |
| V9185-20UG | 0.2 mg/ml in 1X PBS with 0.1 mg/ml BSA (US sourced), 0.05% sodium azide | 20 ug |
| V9185SAF-100UG | 1 mg/ml in 1X PBS; BSA free, sodium azide free | 100 ug |

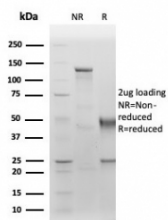
Recombinant **RABBIT MONOCLONAL**

[Bulk quote request](#)

| | |
|---------------------------|---|
| Availability | 1-3 business days |
| Species Reactivity | Human |
| Format | Purified |
| Clonality | Recombinant Rabbit Monoclonal |
| Isotype | Rabbit IgG |
| Clone Name | ALB/6411R |
| Purity | Protein A/G affinity |
| UniProt | P02768 |
| Localization | Cell surface, Cytoplasm |
| Applications | ELISA (order BSA-free Format For Coating) : Immunohistochemistry (FFPE) : 1-2ug/ml |
| Limitations | This ALB antibody is available for research use only. |



IHC staining of FFPE human liver carcinoma in colon tissue with ALB antibody (clone ALB/6411R). HIER: boil tissue sections in pH 9 10mM Tris with 1mM EDTA for 20 min and allow to cool before testing.



SDS-PAGE analysis of purified, BSA-free ALB antibody (clone ALB/6411R) as confirmation of integrity and purity.

Description

Albumin is a soluble, monomeric protein, which comprises about one half of the blood serum protein. Albumin functions primarily as a carrier protein for steroids, fatty acids, and thyroid hormones and plays a role in stabilizing extracellular fluid volume. Albumin is synthesized in the liver as preproalbumin, which has an N-terminal peptide that is removed before the nascent protein is released from the rough endoplasmic reticulum. The product, proalbumin, is in turn cleaved in the Golgi vesicles to produce the secreted form of albumin.

Application Notes

Optimal dilution of the ALB antibody should be determined by the researcher.

Immunogen

Recombinant full-length human ALB protein was used as the immunogen for the ALB antibody.

Storage

Aliquot the ALB antibody and store frozen at -20oC or colder. Avoid repeated freeze-thaw cycles.