

AKT2 Antibody (F50044)

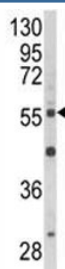
Catalog No.	Formulation	Size
F50044-0.4ML	In 1X PBS, pH 7.4, with 0.09% sodium azide	0.4 ml
F50044-0.08ML	In 1X PBS, pH 7.4, with 0.09% sodium azide	0.08 ml

[Bulk quote request](#)

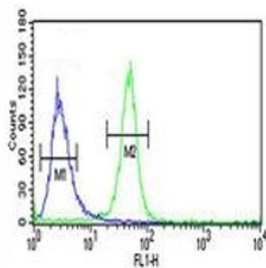
Availability	1-3 business days
Species Reactivity	Human, Mouse
Format	Antigen affinity purified
Clonality	Polyclonal (rabbit origin)
Isotype	Rabbit Ig
Purity	Antigen affinity
UniProt	P31751
Applications	Western Blot : 1:1000 Flow Cytometry : 1:10-1:50 Immunofluorescence : 1:10-1:50
Limitations	This AKT2 antibody is available for research use only.



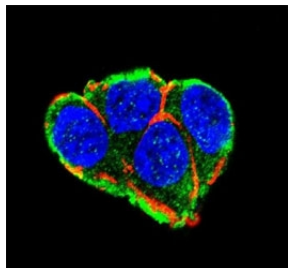
Western blot analysis of AKT2 antibody and mouse brain tissue lysate. Predicted molecular weight: ~56kDa.



Western blot analysis of AKT2 antibody and NCI-H460 lysate. Predicted molecular weight: ~56kDa.



AKT2 antibody flow cytometric analysis of NCI-H460 cells (green) compared to a negative control (blue).



Confocal immunofluorescent analysis of AKT2 antibody with 293 cells followed by Alexa Fluor 488-conjugated goat anti-rabbit IgG (green), Actin filaments (red) and DAPI nuclear counterstain (blue).

Description

AKT2 is a putative oncogenic protein belonging to a subfamily of serine/threonine kinases containing SH2-like (Src homology 2-like) domains. AKT2 is a general protein kinase capable of phosphorylating several known proteins.

Application Notes

The stated application concentrations are suggested starting amounts. Titration of the AKT2 antibody may be required due to differences in protocols and secondary/substrate sensitivity.

Immunogen

This AKT2 antibody was produced from rabbits immunized with human AKT2 recombinant protein.

Storage

Store at 4°C for up to one month. For long term, aliquot the AKT2 antibody and store frozen at -20°C or colder. Avoid repeated freeze-thaw cycles.