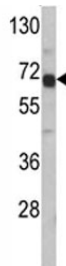


AFP Antibody / Alpha-fetoprotein (F43721)

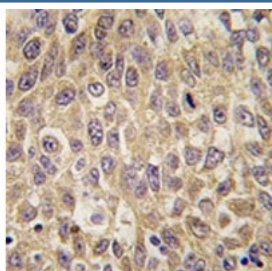
Catalog No.	Formulation	Size
F43721-0.4ML	In 1X PBS, pH 7.4, with 0.09% sodium azide	0.4 ml
F43721-0.08ML	In 1X PBS, pH 7.4, with 0.09% sodium azide	0.08 ml

Bulk quote request

Availability	1-3 business days
Species Reactivity	Human
Format	Antigen affinity purified
Clonality	Polyclonal (rabbit origin)
Isotype	Rabbit Ig
Purity	Antigen affinity
UniProt	P02771
Applications	Western Blot : 1:1000 IHC (Paraffin) : 1:10-1:50
Limitations	This AFP antibody is available for research use only.



Western blot analysis of AFP antibody and HepG2 lysate. Predicted molecular weight: ~70kDa.



IHC analysis of FFPE human hepatocarcinoma tissue stained with AFP antibody

Description

Alpha-fetoprotein is a major plasma protein produced by the yolk sac and the liver during fetal life. This protein is thought to be the fetal counterpart of serum albumin, and the alpha-fetoprotein and albumin genes are present in tandem in the same transcriptional orientation on chromosome 4.

Application Notes

The concentration stated for each application is a general starting point. Titration of the AFP antibody may be required.

Immunogen

A portion of amino acids 56-85 from the human protein was used as the immunogen for this AFP antibody.

Storage

Store at 4°C for up to one month. For long term, aliquot the AFP antibody and store frozen at -20°C or colder. Avoid repeated freeze-thaw cycles.