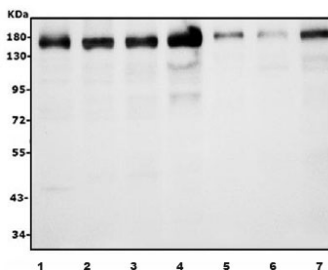


## AFF4 Antibody [clone 8G12] (RQ6288)

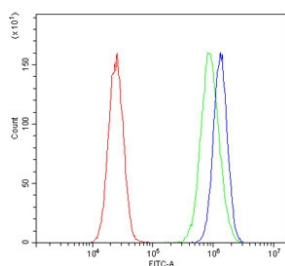
Catalog No.	Formulation	Size
RQ6288	0.5mg/ml if reconstituted with 0.2ml sterile DI water	100 ug

**Bulk quote request**

<b>Availability</b>	1-3 business days
<b>Species Reactivity</b>	Human
<b>Format</b>	Antigen affinity purified
<b>Clonality</b>	Monoclonal (mouse origin)
<b>Isotype</b>	Mouse IgG2b
<b>Clone Name</b>	8G12
<b>Purity</b>	Affinity purified
<b>Buffer</b>	Lyophilized from 1X PBS with 2% Trehalose
<b>UniProt</b>	Q9UHB7
<b>Applications</b>	Western Blot : 1-2ug/ml Flow Cytometry : 1-3ug/million cells
<b>Limitations</b>	This AFF4 antibody is available for research use only.



Western blot testing of human 1) HeLa, 2) HepG2, 3) Caco-2, 4) HEK293, 5) MDA-MB-453, 6) PANC-1 and 7) SW620 cell lysate with AFF4 antibody. Predicted molecular weight ~127/98/39 kDa (isoforms 1/2/3).



Flow cytometry testing of human 293T cells with AFF4 antibody at 1ug/million cells (blocked with goat sera); Red=cells alone, Green=isotype control, Blue= AFF4 antibody.

## Description

The AFF4 gene encodes a scaffold protein that functions as a core component of the super elongation complex (SEC), which is involved in transcriptional regulation during embryogenesis. The protein encoded by this gene belongs to the AF4 family of transcription factors involved in leukemia. It is a component of the positive transcription elongation factor b (P-TEFb) complex. This gene is mapped to chromosome 5q31.

## Application Notes

Optimal dilution of the AFF4 antibody should be determined by the researcher.

## Immunogen

Amino acids RNVLRMKERERRNQEIQQGEDAFPPSSPLFAEPYKVTSKEDKLSSRIQ from the human protein were used as the immunogen for the AFF4 antibody.

## Storage

After reconstitution, the AFF4 antibody can be stored for up to one month at 4oC. For long-term, aliquot and store at -20oC. Avoid repeated freezing and thawing.