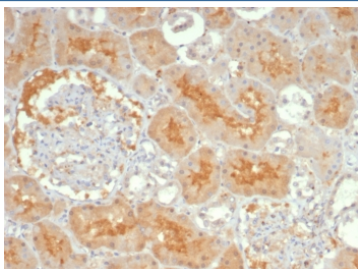


## Adenylyl cyclase 8 Antibody / ADCY8 [clone ADCY8/7341] (V5224)

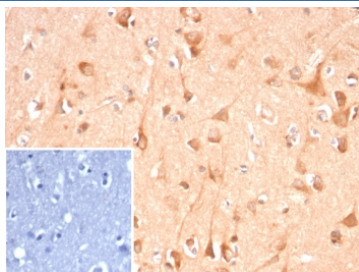
Catalog No.	Formulation	Size
V5224-100UG	0.2 mg/ml in 1X PBS with 0.1 mg/ml BSA (US sourced), 0.05% sodium azide	100 ug
V5224-20UG	0.2 mg/ml in 1X PBS with 0.1 mg/ml BSA (US sourced), 0.05% sodium azide	20 ug
V5224SAF-100UG	1 mg/ml in 1X PBS; BSA free, sodium azide free	100 ug

[Bulk quote request](#)

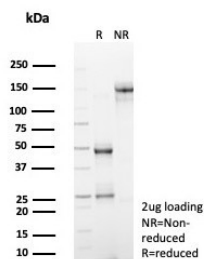
<b>Availability</b>	1-3 business days
<b>Species Reactivity</b>	Human
<b>Format</b>	Purified
<b>Clonality</b>	Monoclonal (mouse origin)
<b>Isotype</b>	Mouse IgG, kappa
<b>Clone Name</b>	ADCY8/7341
<b>Purity</b>	Protein A/G affinity
<b>UniProt</b>	P40145
<b>Localization</b>	Cell surface, Cytoplasm
<b>Applications</b>	Immunohistochemistry (FFPE) : 1-2ug/ml for 30 min at RT
<b>Limitations</b>	This Adenylyl cyclase 8 antibody is available for research use only.



IHC staining of FFPE human kidney tissue with Adenylyl cyclase 8 antibody (clone ADCY8/7341). HIER: boil tissue sections in pH 9 10mM Tris with 1mM EDTA for 20 min and allow to cool before testing.



IHC staining of FFPE human brain tissue with Adenylyl cyclase 8 antibody (clone ADCY8/7341). Inset: PBS used in place of primary Ab (secondary Ab negative control).  
HIER: boil tissue sections in pH 9 10mM Tris with 1mM EDTA for 20 min and allow to cool before testing.



SDS-PAGE analysis of purified, BSA-free Adenylyl cyclase 8 antibody (clone ADCY8/7341) as confirmation of integrity and purity.

## Description

Adenylate cyclase is a membrane bound enzyme that catalyses the formation of cyclic AMP from ATP. The enzymatic activity is under the control of several hormones, and different polypeptides participate in the transduction of the signal from the receptor to the catalytic moiety. Stimulatory or inhibitory receptors (Rs and Ri) interact with G proteins (Gs and Gi) that exhibit GTPase activity and they modulate the activity of the catalytic subunit of the adenylyl cyclase [provided by RefSeq, Jul 2008]

## Application Notes

Optimal dilution of the Adenylyl cyclase 8 antibody should be determined by the researcher.

## Immunogen

A recombinant partial protein sequence (within amino acids 1-200) from the human protein was used as the immunogen for the Adenylyl cyclase 8 antibody.

## Storage

Aliquot the Adenylyl cyclase 8ADCY8 antibody and store frozen at -20oC or colder. Avoid repeated freeze-thaw cycles.