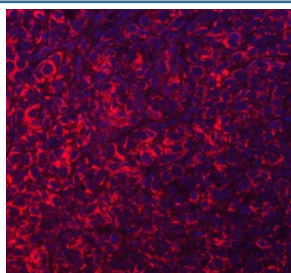


## Acyl-CoA dehydrogenase family member 9 Antibody / ACAD9 (RQ7607)

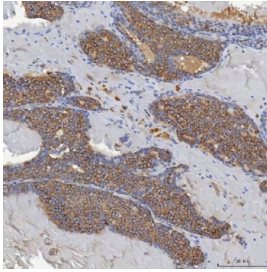
| Catalog No. | Formulation   | Size   |
|-------------|---|--------|
| RQ7607      | 0.5mg/ml if reconstituted with 0.2ml sterile DI water | 100 ug |

**Bulk quote request**

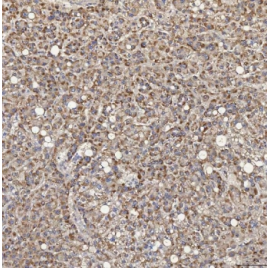
|                           |  |
|---------------------------|--|
| <b>Availability</b>       | 1-3 business days  |
| <b>Species Reactivity</b> | Human  |
| <b>Format</b>             | Antigen affinity purified  |
| <b>Clonality</b>          | Polyclonal (rabbit origin)   |
| <b>Isotype</b>            | Rabbit IgG   |
| <b>Purity</b>             | Antigen affinity purified  |
| <b>Buffer</b>             | Lyophilized from 1X PBS with 2% Trehalose  |
| <b>UniProt</b>            | Q9H845   |
| <b>Localization</b>       | Cytoplasmic (mitochondria)   |
| <b>Applications</b>       | Western Blot : 0.5-1ug/ml<br>Immunohistochemistry (FFPE) : 2-5ug/ml<br>Immunofluorescence :<br>Flow Cytometry : 1-3ug/million cells<br>Direct ELISA : 0.1-0.5ug/ml |
| <b>Limitations</b>        | This Acyl-CoA dehydrogenase family member 9 antibody is available for research use only.   |



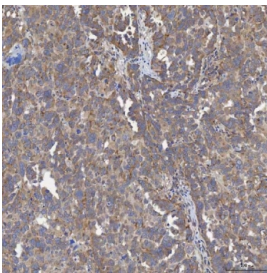
Immunofluorescent staining of FFPE human breast cancer tissue with Acyl-CoA dehydrogenase family member 9 antibody (red) and DAPI nuclear stain (blue). HIER: steam section in pH8 EDTA buffer for 20 min.



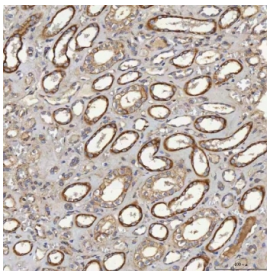
IHC staining of FFPE human breast cancer tissue with Acyl-CoA dehydrogenase family member 9 antibody. HIER: boil tissue sections in pH8 EDTA for 20 min and allow to cool before testing.



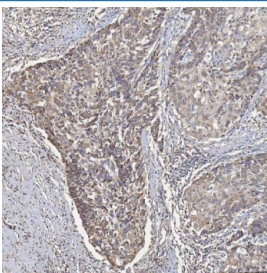
IHC staining of FFPE human liver cancer tissue with Acyl-CoA dehydrogenase family member 9 antibody. HIER: boil tissue sections in pH8 EDTA for 20 min and allow to cool before testing.



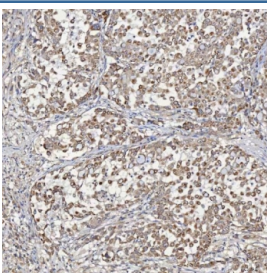
IHC staining of FFPE human ovarian serous cancer tissue with Acyl-CoA dehydrogenase family member 9 antibody. HIER: boil tissue sections in pH8 EDTA for 20 min and allow to cool before testing.



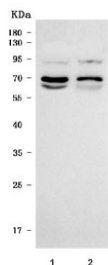
IHC staining of FFPE human renal cancer tissue with Acyl-CoA dehydrogenase family member 9 antibody. HIER: boil tissue sections in pH8 EDTA for 20 min and allow to cool before testing.



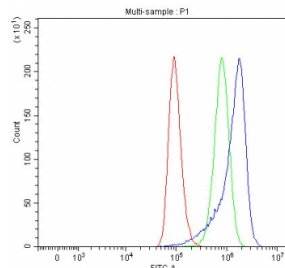
IHC staining of FFPE human larynx squamous cell carcinoma tissue with Acyl-CoA dehydrogenase family member 9 antibody. HIER: boil tissue sections in pH8 EDTA for 20 min and allow to cool before testing.



IHC staining of FFPE human lung adenocarcinoma tissue with Acyl-CoA dehydrogenase family member 9 antibody. HIER: boil tissue sections in pH8 EDTA for 20 min and allow to cool before testing.



Western blot testing of human 1) 293T and 2) K562 cell lysate with Acyl-CoA dehydrogenase family member 9 antibody. Predicted molecular weight ~69 kDa.



Flow cytometry testing of human A549 cells with Acyl-CoA dehydrogenase family member 9 antibody at 1ug/million cells (blocked with goat sera); Red=cells alone, Green=isotype control, Blue= Acyl-CoA dehydrogenase family member 9 antibody.

## Description

Acyl-CoA dehydrogenase family member 9, mitochondrial is an enzyme that in humans is encoded by the ACAD9 gene. This gene encodes a member of the acyl-CoA dehydrogenase family. Members of this family of proteins localize to the mitochondria and catalyze the rate-limiting step in the beta-oxidation of fatty acyl-CoA. The encoded protein is specifically active toward palmitoyl-CoA and long-chain unsaturated substrates. Mutations in this gene cause acyl-CoA dehydrogenase family member type 9 deficiency. Alternate splicing results in multiple transcript variants.

## Application Notes

Optimal dilution of the Acyl-CoA dehydrogenase family member 9 antibody should be determined by the researcher.

## Immunogen

E. coli-derived recombinant human protein (amino acids K92-C621) was used as the immunogen for the Acyl-CoA dehydrogenase family member 9 antibody.

## Storage

After reconstitution, the Acyl-CoA dehydrogenase family member 9 antibody can be stored for up to one month at 4oC. For long-term, aliquot and store at -20oC. Avoid repeated freezing and thawing.