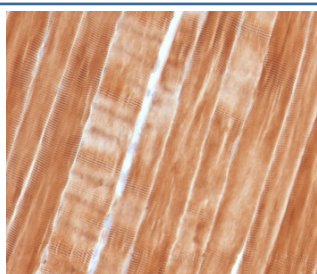


ACTN2 Antibody / Sarcomeric Alpha Actinin / Alpha Actinin 2 [clone SAMA-1] (V7530)

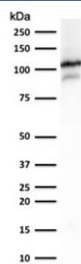
| Catalog No. | Formulation | Size |
|----------------|---|--------|
| V7530-100UG | 0.2 mg/ml in 1X PBS with 0.1 mg/ml BSA (US sourced) and 0.05% sodium azide | 100 ug |
| V7530-20UG | 0.2 mg/ml in 1X PBS with 0.1 mg/ml BSA (US sourced) and 0.05% sodium azide | 20 ug |
| V7530SAF-100UG | 1 mg/ml in 1X PBS; sodium azide free | 100 ug |
| V7530IHC-7ML | Prediluted in 1X PBS with 0.1 mg/ml BSA (US sourced) and 0.05% sodium azide; *For IHC use only* | 7 ml |

Bulk quote request

| | |
|--------------------|---|
| Availability | 1-3 business days |
| Species Reactivity | Human |
| Format | Purified |
| Clonality | Monoclonal (mouse origin) |
| Isotype | Mouse IgG1, kappa |
| Clone Name | SAMA-1 |
| Purity | Protein G affinity chromatography |
| UniProt | P35609 |
| Localization | Cytoplasmic |
| Applications | Western Blot : 1-2ug/ml Immunohistochemistry (FFPE) : 1-2ug/ml Prediluted IHC Only Format : incubate for 30 min at RT (1) |
| Limitations | This ACTN2 antibody is available for research use only. |



IHC staining of FFPE human skeletal muscle tissue with Sarcomeric Alpha Actinin antibody (clone SAMA-1). HIER: boil tissue sections in pH 9 10mM Tris with 1mM EDTA for 10-20 min and allow to cool before testing.



Western blot testing of human skeletal muscle lysate with Sarcomeric Alpha Actinin antibody (clone SAMA-1). Predicted molecular weight ~103 kDa.

Description

The ACTN2 gene encodes a muscle-specific, alpha actinin isoform that is expressed in both skeletal and cardiac muscles.

Application Notes

The optimal dilution of the ACTN2 antibody for each application should be determined by the researcher.

1. The prediluted format is supplied in a dropper bottle and is optimized for use in IHC. After epitope retrieval step (if required), drip mAb solution onto the tissue section and incubate at RT for 30 min.

Immunogen

Amino acids 557-692 from the human protein were used as the immunogen for this ACTN2 antibody.

Storage

Store the ACTN2 antibody at 2-8°C (with azide) or aliquot and store at -20°C or colder (without azide).