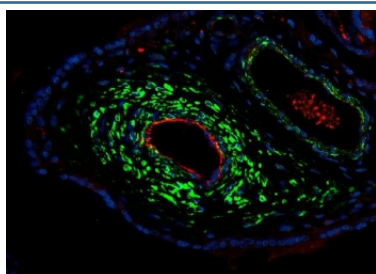


## ACTA2 Antibody [clone 1A4] (R30094)

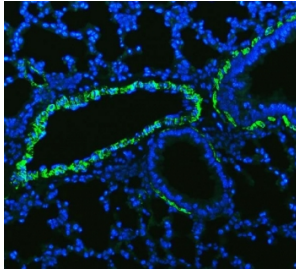
Catalog No.	Formulation	Size
R30094	0.5mg/ml if reconstituted with 0.2ml sterile DI water	100 ug

**Bulk quote request**

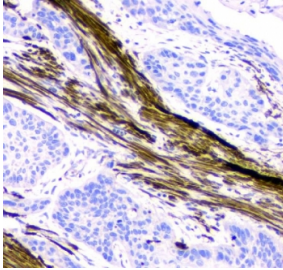
<b>Availability</b>	1-3 business days
<b>Species Reactivity</b>	Human, Mouse, Rat
<b>Format</b>	Ascites
<b>Clonality</b>	Monoclonal (mouse origin)
<b>Isotype</b>	Mouse IgG2a
<b>Clone Name</b>	1A4
<b>Purity</b>	Unpurified ascites
<b>Buffer</b>	Mouse ascites fluid with 2.5% BSA and 0.025% sodium azide
<b>UniProt</b>	P62736
<b>Gene ID</b>	59
<b>Applications</b>	Western Blot : 0.5-1ug/ml Immunohistochemistry (FFPE) : 2-5ug/ml Immunohistochemistry (Frozen) : 2-5ug/ml Immunofluorescence : 5ug/ml
<b>Limitations</b>	This ACTA2 antibody is available for research use only.



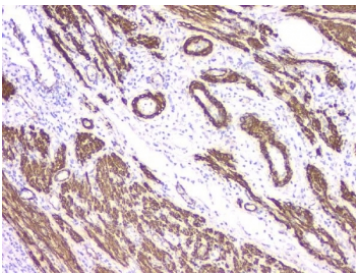
Immunofluorescent staining of FFPE human placental tissue with ACTA2 antibody (green), CD31 antibody (red) and DAPI nuclear stain (blue). HIER: steam section in pH8 EDTA buffer for 20 min.



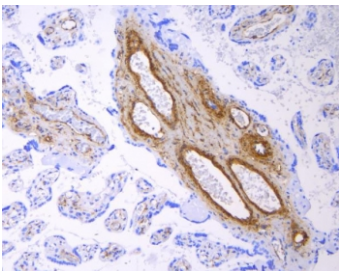
Immunofluorescent staining of FFPE rat lung tissue with ACTA2 antibody (green) and DAPI nuclear stain (blue). HIER: steam section in pH8 EDTA buffer for 20 min.



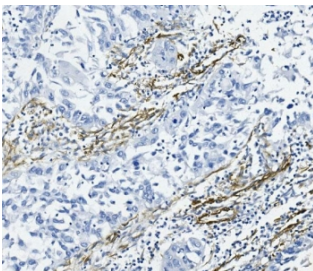
IHC staining of FFPE human esophagus squama cancer tissue with ACTA2 antibody. HIER: boil tissue sections in pH8 EDTA for 20 min and allow to cool before testing.



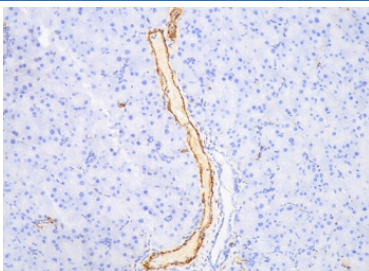
IHC staining of FFPE human endometrial carcinoma tissue with ACTA2 antibody. HIER: boil tissue sections in pH8 EDTA for 20 min and allow to cool before testing.



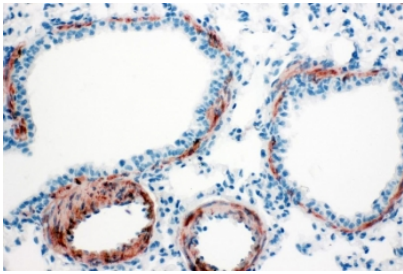
IHC staining of FFPE human placental tissue with ACTA2 antibody. HIER: boil tissue sections in pH8 EDTA for 20 min and allow to cool before testing.



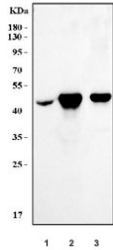
IHC staining of FFPE human lung cancer tissue with ACTA2 antibody. HIER: boil tissue sections in pH8 EDTA for 20 min and allow to cool before testing.



IHC staining of FFPE mouse pancreas tissue with ACTA2 antibody. HIER: boil tissue sections in pH8 EDTA for 20 min and allow to cool before testing.



IHC staining of FFPE rat lung tissue with ACTA2 antibody. HIER: boil tissue sections in pH8 EDTA for 20 min and allow to cool before testing.



Western blot testing of 1) human placenta, 2) rat stomach and 3) mouse stomach tissue lysate with ACTA2 antibody.

## Description

Actin is a major component of the cytoskeleton and is present in most cell types.

## Application Notes

The stated application concentrations are suggested starting points. Titration of the ACTA2 antibody may be required due to differences in protocols and secondary/substrate sensitivity.

## Immunogen

Amino acids 1-10 of alpha-smooth muscle actin was used as the immunogen for this ACTA2 antibody.

## Storage

After reconstitution, the ACTA2 antibody can be stored for up to one month at 4°C. For long-term, aliquot and store at -20°C. Avoid repeated freezing and thawing.