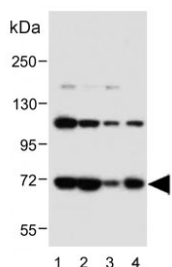


## Acid Sphingomyelinase Antibody / SMPD1 (F54362)

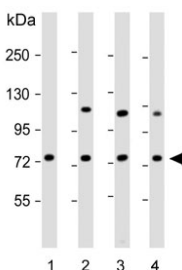
Catalog No.	Formulation	Size
F54362-0.4ML	In 1X PBS, pH 7.4, with 0.09% sodium azide	0.4 ml
F54362-0.08ML	In 1X PBS, pH 7.4, with 0.09% sodium azide	0.08 ml

**Bulk quote request**

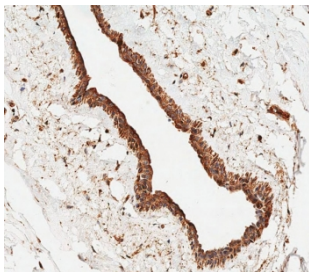
<b>Availability</b>	1-3 business days
<b>Species Reactivity</b>	Human
<b>Format</b>	Purified
<b>Clonality</b>	Polyclonal (rabbit origin)
<b>Isotype</b>	Rabbit IgG
<b>Purity</b>	Antigen affinity purified
<b>UniProt</b>	P17405
<b>Applications</b>	Immunohistochemistry (FFPE) : 1:25 Western Blot : 1:500-1:2000 Flow Cytometry : 1:25 (1x10e6 cells)
<b>Limitations</b>	This Acid Sphingomyelinase antibody is available for research use only.



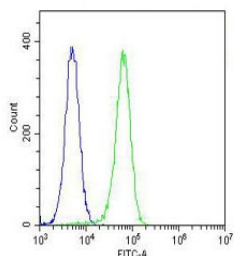
Western blot testing of human 1) K562, 2) MCF7, 3) HepG2 and 4) A431 cell lysate with Acid Sphingomyelinase antibody. Predicted molecular weight ~70 kDa.



Western blot testing of human 1) cerebellum, 2) K562, 3) HepG2 and 4) MCF7 cell lysate with Acid Sphingomyelinase antibody. Predicted molecular weight ~70 kDa.



IHC testing of FFPE human breast tissue with Acid Sphingomyelinase antibody. HIER: steam section in pH9 EDTA for 20 min and allow to cool prior to staining.



Flow cytometry testing of fixed and permeabilized human K562 cells with Acid Sphingomyelinase antibody; Blue=isotype control, Green= Acid Sphingomyelinase antibody.

## Description

The protein encoded by this gene is a lysosomal acid sphingomyelinase that converts sphingomyelin to ceramide. The encoded protein also has phospholipase C activity. Defects in this gene are a cause of Niemann-Pick disease type A (NPA) and Niemann-Pick disease type B (NPB). Multiple transcript variants encoding different isoforms have been identified. [provided by RefSeq].

## Application Notes

The stated application concentrations are suggested starting points. Titration of the Acid Sphingomyelinase antibody may be required due to differences in protocols and secondary/substrate sensitivity.

## Immunogen

A portion of amino acids 391-419 from the human protein was used as the immunogen for the Acid Sphingomyelinase antibody.

## Storage

Aliquot the Acid Sphingomyelinase antibody and store frozen at -20oC or colder. Avoid repeated freeze-thaw cycles.