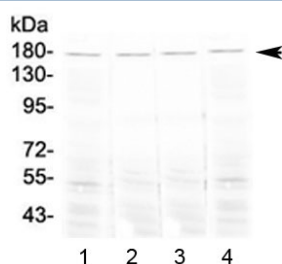


## Ace Antibody / Angiotensin I converting enzyme (RQ4007)

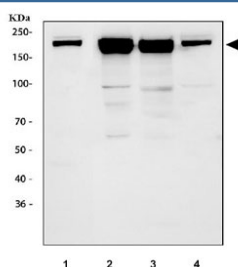
Catalog No.	Formulation	Size
RQ4007	0.5mg/ml if reconstituted with 0.2ml sterile DI water	100 ug

**Bulk quote request**

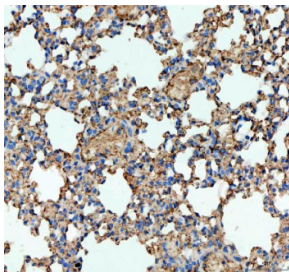
<b>Availability</b>	1-3 business days
<b>Species Reactivity</b>	Mouse, Rat
<b>Format</b>	Antigen affinity purified
<b>Clonality</b>	Polyclonal (rabbit origin)
<b>Isotype</b>	Rabbit IgG
<b>Purity</b>	Antigen affinity purified
<b>Buffer</b>	Lyophilized from 1X PBS with 2% Trehalose
<b>UniProt</b>	P09470
<b>Applications</b>	Western Blot : 0.5-1ug/ml Immunohistochemistry (FFPE) : 2-5ug/ml Flow Cytometry : 1-3ug/million cells
<b>Limitations</b>	This Ace antibody is available for research use only.



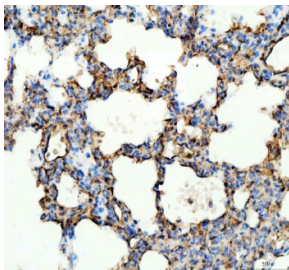
Western blot testing of 1) mouse lung, 2) mouse testis, 3) mouse stomach and 4) rat lung tissue lysate with Ace antibody at 0.5ug/ml. Expected molecular weight 140-170 kDa.



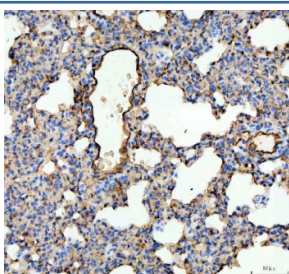
Western blot testing of 1) rat lung, 2) mouse lung, 3) mouse kidney and 4) mouse heart tissue lysate with Ace antibody. Expected molecular weight 140-170 kDa.



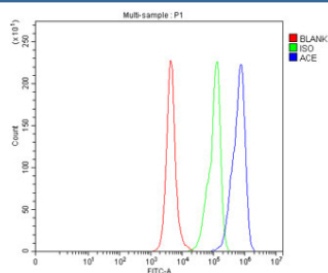
IHC staining of FFPE mouse lung tissue with Ace antibody. HIER: boil tissue sections in pH8 EDTA for 20 min and allow to cool before testing.



IHC staining of FFPE rat lung tissue with Ace antibody. HIER: boil tissue sections in pH8 EDTA for 20 min and allow to cool before testing.



IHC staining of FFPE rat lung tissue with Ace antibody. HIER: boil tissue sections in pH8 EDTA for 20 min and allow to cool before testing.



Flow cytometry testing of fixed mouse RAW264.7 cells with Ace antibody at 1ug/million cells (blocked with goat sera); Red=cells alone, Green=isotype control, Blue= Ace antibody.

## Description

Angiotensin I converting enzyme (ACE), also called DCP or CD143 is a zinc-containing dipeptidyl carboxypeptidase widely distributed in mammalian tissues and is thought to play a critical role in blood pressure regulation. This gene is mapped to 17q23.3. This gene encodes an enzyme involved in catalyzing the conversion of angiotensin I into a physiologically active peptide angiotensin II. Angiotensin II is a potent vasopressor and aldosterone-stimulating peptide that controls blood pressure and fluid-electrolyte balance. This enzyme plays a key role in the renin-angiotensin system. Many studies have associated the presence or absence of a 287 bp Alu repeat element in this gene with the levels of circulating enzyme or cardiovascular pathophysiologies.

## Application Notes

Optimal dilution of the Ace antibody should be determined by the researcher.

## Immunogen

Amino acids AMMNFKPLTEWLVLTENRRHGETLGWPEYNWAPNTAR from the mouse protein were used as the immunogen for the Ace antibody.

## Storage

After reconstitution, the Ace antibody can be stored for up to one month at 4°C. For long-term, aliquot and store at -20°C. Avoid repeated freezing and thawing.