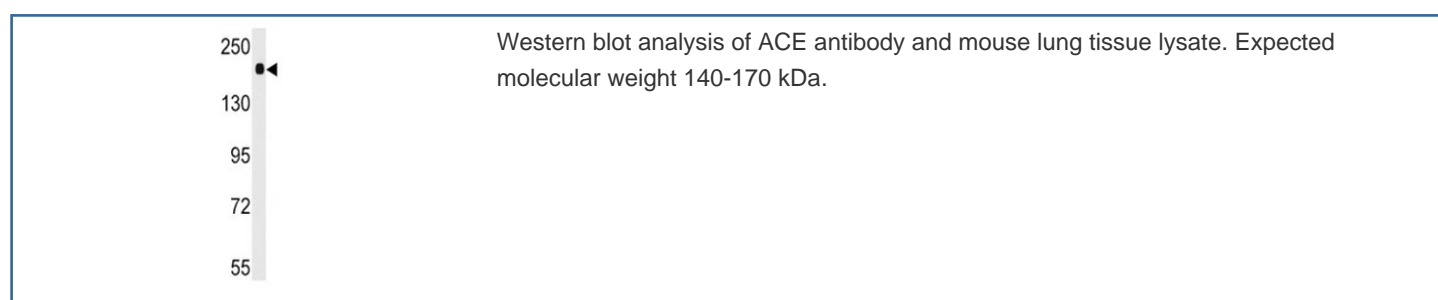


ACE Antibody / Angiotensin-Converting Enzyme (F50773)

Catalog No.	Formulation	Size
F50773-0.4ML	In 1X PBS, pH 7.4, with 0.09% sodium azide	0.4 ml
F50773-0.08ML	In 1X PBS, pH 7.4, with 0.09% sodium azide	0.08 ml

[Bulk quote request](#)

Availability	1-3 business days
Species Reactivity	Human, Mouse
Format	Purified
Clonality	Polyclonal (rabbit origin)
Isotype	Rabbit Ig
Purity	Purified
UniProt	P12821
Applications	Western Blot : 1:1000
Limitations	This ACE antibody is available for research use only.



Description

ACE is an enzyme involved in catalyzing the conversion of angiotensin I into a physiologically active peptide angiotensin II. Angiotensin II is a potent vasopressor and aldosterone-stimulating peptide that controls blood pressure and fluid-electrolyte balance. This enzyme plays a key role in the renin-angiotensin system. Many studies have associated the presence or absence of a 287 bp Alu repeat element in this gene with the levels of circulating enzyme or cardiovascular pathophysiology. Two most abundant alternatively spliced variants of this gene encode two isoforms - the somatic form and the testicular form that are equally active.

Application Notes

Titration of the ACE antibody may be required due to differences in protocols and secondary/substrate sensitivity.

Immunogen

A portion of amino acids 1274-1306 from the human protein was used as the immunogen for this ACE antibody.

Storage

Aliquot the ACE antibody and store frozen at -20oC or colder. Avoid repeated freeze-thaw cycles.