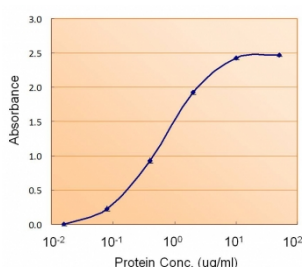


ACACB Antibody / Acetyl-coenzyme A carboxylase beta (R35351)

| Catalog No. | Formulation | Size |
|--------------|---|--------|
| R35351-100UG | 0.5 mg/ml in 1X TBS, pH7.3, with 0.5% BSA (US sourced) and 0.02% sodium azide | 100 ug |

[Bulk quote request](#)

| | |
|--------------------|--|
| Availability | 1-3 business days |
| Species Reactivity | Human |
| Format | Antigen affinity purified |
| Clonality | Polyclonal (goat origin) |
| Isotype | Goat Ig |
| Purity | Antigen affinity |
| Gene ID | 32 |
| Applications | Enzyme ImmunoAssay : used as capture for recombinant protein (coat at 1-2ug/ml) ELISA (peptide) LOD : 1:32000 |
| Limitations | This ACACB antibody is available for research use only. |



Sandwich ELISA with ACACB antibody at 1.5ug/ml as the detect

Description

Additional name(s) for this target protein: Acetyl-CoA carboxylase 2

Application Notes

Optimal dilution of the ACACB antibody should be determined by the researcher.

Immunogen

Amino acids QLGEPLDSDKDRKD were used as the immunogen for this ACACB antibody.

Storage

Aliquot and store the ACACB antibody at -20oC.